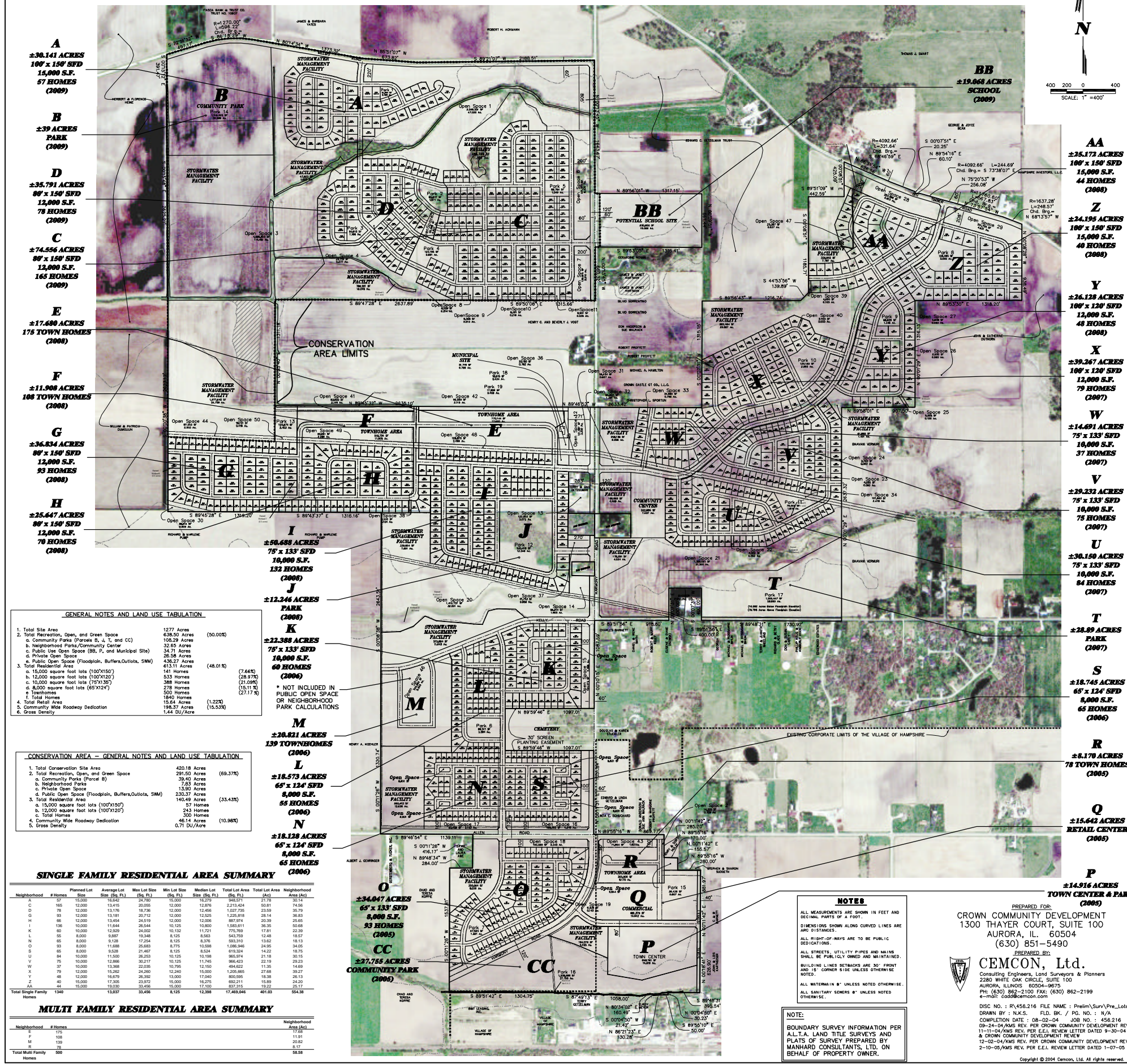
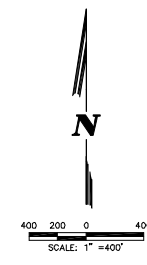


PRAIRIE RIDGE PRELIMINARY PLAT OF SUBDIVISION



- A**
±30.141 ACRES
100' x 150' SFD
15,000 S.F.
57 HOMES
(2009)
- B**
±39 ACRES
PARK
(2009)
- D**
±35.791 ACRES
80' x 150' SFD
12,000 S.F.
78 HOMES
(2009)
- C**
±74.556 ACRES
80' x 150' SFD
12,000 S.F.
165 HOMES
(2009)
- E**
±17.600 ACRES
175 TOWN HOMES
(2008)
- F**
±11.908 ACRES
108 TOWN HOMES
(2008)
- G**
±36.834 ACRES
80' x 150' SFD
12,000 S.F.
93 HOMES
(2008)
- H**
±25.647 ACRES
80' x 150' SFD
12,000 S.F.
70 HOMES
(2008)

- AA**
±25.172 ACRES
100' x 150' SFD
15,000 S.F.
44 HOMES
(2008)
- Z**
±24.195 ACRES
100' x 150' SFD
15,000 S.F.
40 HOMES
(2008)
- Y**
±26.128 ACRES
100' x 120' SFD
12,000 S.F.
48 HOMES
(2008)
- X**
±39.267 ACRES
100' x 120' SFD
12,000 S.F.
79 HOMES
(2007)
- W**
±14.691 ACRES
75' x 133' SFD
10,000 S.F.
37 HOMES
(2007)
- V**
±29.232 ACRES
75' x 133' SFD
10,000 S.F.
75 HOMES
(2007)
- U**
±30.150 ACRES
75' x 133' SFD
10,000 S.F.
84 HOMES
(2007)
- T**
±28.89 ACRES
PARK
(2007)
- S**
±18.745 ACRES
65' x 124' SFD
8,000 S.F.
65 HOMES
(2006)
- R**
±8.170 ACRES
78 TOWN HOMES
(2005)
- Q**
±15.642 ACRES
RETAIL CENTER
(2005)
- P**
±14.916 ACRES
TOWN CENTER & PARK
(2005)

GENERAL NOTES AND LAND USE TABULATION

1. Total Site Area	1277 Acres	(50.00%)
2. Total Recreation, Open, and Green Space	638.50 Acres	(50.00%)
a. Community Parks (Parks B, U, T, and CC)	108.29 Acres	
b. Neighborhood Parks/Community Center	32.65 Acres	
c. Public Use Open Space (BB, P, and Municipal Site)	34.71 Acres	
d. Private Open Space	26.28 Acres	
e. Public Open Space (Floodplain, Buffers/Outlets, SWM)	436.27 Acres	(48.01%)
3. Total Residential Area	613.11 Acres	(7.64%)
a. 15,000 square foot lots (100'x150')	141 Homes	(28.37%)
b. 12,000 square foot lots (100'x150')	533 Homes	(86.97%)
c. 10,000 square foot lots (75'x133')	388 Homes	(62.92%)
d. 8,000 square foot lots (65'x124')	278 Homes	(45.11%)
e. Townhomes	500 Homes	(81.71%)
f. Total Homes	1840 Homes	(1.22%)
4. Total Retail Area	15.64 Acres	(15.53%)
5. Community Wide Roadway Dedication	198.37 Acres	
6. Gross Density	1.44 DU/Acre	

CONSERVATION AREA - GENERAL NOTES AND LAND USE TABULATION

1. Total Conservation Site Area	420.18 Acres
2. Total Recreation, Open, and Green Space	291.50 Acres (69.37%)
a. Community Parks (Parks B)	39.40 Acres
b. Neighborhood Parks	7.83 Acres
c. Private Open Space	13.80 Acres
d. Public Open Space (Floodplain, Buffers/Outlets, SWM)	230.37 Acres
3. Total Residential Area	140.49 Acres (33.43%)
a. 15,000 square foot lots (100'x150')	37 Homes
b. 12,000 square foot lots (100'x150')	243 Homes
c. Total Homes	300 Homes
4. Total Retail Area	48.14 Acres (10.98%)
5. Gross Density	0.71 DU/Acre

SINGLE FAMILY RESIDENTIAL AREA SUMMARY

Neighborhood	# Homes	Planned Lot Size	Average Lot Size	Max Lot Size	Min Lot Size	Median Lot Size	Total Lot Area	Total Lot Area	Neighborhood
		(Sq. Ft.)	(Sq. Ft.)	(Sq. Ft.)	(Sq. Ft.)	(Sq. Ft.)	(Acres)	(Acres)	
A	57	15,000	16,262	24,750	10,000	12,276	938,371	21.79	30.14
B	160	12,000	12,415	20,000	10,000	12,276	2,214,624	50.81	74.30
C	78	12,000	11,176	18,750	12,000	12,456	1,207,236	27.89	36.79
D	93	12,000	13,161	20,712	12,000	12,205	1,226,818	28.14	36.83
E	60	10,000	13,464	24,018	12,000	12,006	887,874	20.39	28.65
F	136	10,000	11,644	26,544	10,125	10,800	1,383,811	31.35	50.68
G	93	10,000	12,029	24,000	10,100	11,721	776,789	17.81	22.39
H	70	8,000	9,887	19,348	8,125	8,563	543,759	12.48	18.57
I	65	8,000	9,028	17,254	8,125	8,376	563,350	12.82	18.13
J	93	8,000	11,688	25,683	8,775	10,568	1,086,348	24.95	34.05
K	65	8,000	9,028	17,254	8,125	8,376	563,350	12.82	18.13
L	40	10,000	11,600	26,263	10,125	11,168	965,874	21.18	30.15
M	75	10,000	12,886	32,417	10,125	11,748	1,205,860	27.88	39.27
N	37	10,000	13,639	22,335	10,795	12,150	484,622	11.25	14.69
O	40	10,000	12,886	32,417	10,125	11,748	1,205,860	27.88	39.27
P	48	12,000	16,378	26,392	13,000	17,040	800,595	18.38	25.13
Q	40	15,000	17,200	23,775	15,000	16,275	602,211	13.89	24.20
R	60	10,000	11,000	31,000	10,000	11,000	667,750	15.22	20.17
AA	44	15,000	16,262	24,750	10,000	12,276	938,371	21.79	30.14
ZZ	40	15,000	16,262	24,750	10,000	12,276	938,371	21.79	30.14
YY	48	12,000	13,161	20,712	12,000	12,205	1,226,818	28.14	36.83
XX	79	12,000	13,161	20,712	12,000	12,205	1,226,818	28.14	36.83
WW	37	10,000	13,639	22,335	10,795	12,150	484,622	11.25	14.69
VV	75	10,000	12,886	32,417	10,125	11,748	1,205,860	27.88	39.27
UU	84	10,000	11,600	26,263	10,125	11,168	965,874	21.18	30.15
TT	65	8,000	9,028	17,254	8,125	8,376	563,350	12.82	18.13
SS	65	8,000	9,028	17,254	8,125	8,376	563,350	12.82	18.13
RR	78	12,000	13,161	20,712	12,000	12,205	1,226,818	28.14	36.83
QQ	40	15,000	17,200	23,775	15,000	16,275	602,211	13.89	24.20
PP	48	12,000	16,378	26,392	13,000	17,040	800,595	18.38	25.13
Total Single Family Homes	1340		13,607	33,456	8,125	12,398	17,469,946	401.83	554.36

MULTI FAMILY RESIDENTIAL AREA SUMMARY

Neighborhood	# Homes	Neighborhood	# Homes
E	175	BB	17.60
F	108	CC	19.11
M	139	DD	20.82
N	60	EE	58.58
Total Multi Family Homes	500		

NOTES

ALL MEASUREMENTS ARE SHOWN IN FEET AND DECIMAL PARTS OF A FOOT.

SUBDIVISION SHOWN ALONG CURVED LINES ARE ARC DISTANCES.

ALL RIGHT-OF-WAYS ARE TO BE PUBLIC DEDICATIONS.

ALL ERECTIONS, UTILITY PIPES AND MAINS SHALL BE PUBLICLY OWNED AND MAINTAINED.

BUILDING LINES SETBACKS ARE 30' FRONT AND 15' CORNER SIDE UNLESS OTHERWISE NOTED.

ALL WATERWAYS ARE UNLESS NOTED OTHERWISE.

ALL SANITARY SEWERS ARE UNLESS NOTED OTHERWISE.

PREPARED FOR:
CROWN COMMUNITY DEVELOPMENT
1300 THAYER COURT, SUITE 100
AURORA, IL. 60504
(630) 851-5490

PREPARED BY:
CEMCON, Ltd.
Consulting Engineers, Land Surveyors & Planners
2280 WHITE OAK CIRCLE, SUITE 100
AURORA, ILLINOIS 60504-9673
PH: (630) 862-2100 FAX: (630) 862-2199
e-mail: ccm@cemcon.com

DISC NO.: R\458.216 FILE NAME: Prelim\Surv\Pre_Lotloc
DRAWN BY: N.K.S. FLD. BK. / PG. NO.: N/A
COMPLETION DATE: 08-02-04 JOB NO.: 458.216
08-24-04/KMS REV. PER CROWN COMMUNITY DEVELOPMENT REVIEW
11-11-04/KMS REV. PER E.E.L. REVIEW LETTER DATED 9-30-04
& CROWN COMMUNITY DEVELOPMENT REVIEW
12-02-04/KMS REV. PER CROWN COMMUNITY DEVELOPMENT REVIEW
2-10-05/KMS REV. PER L.E.L. REVIEW LETTER DATED 1-07-05

Copyright © 2004 Cemcon, Ltd. All rights reserved.