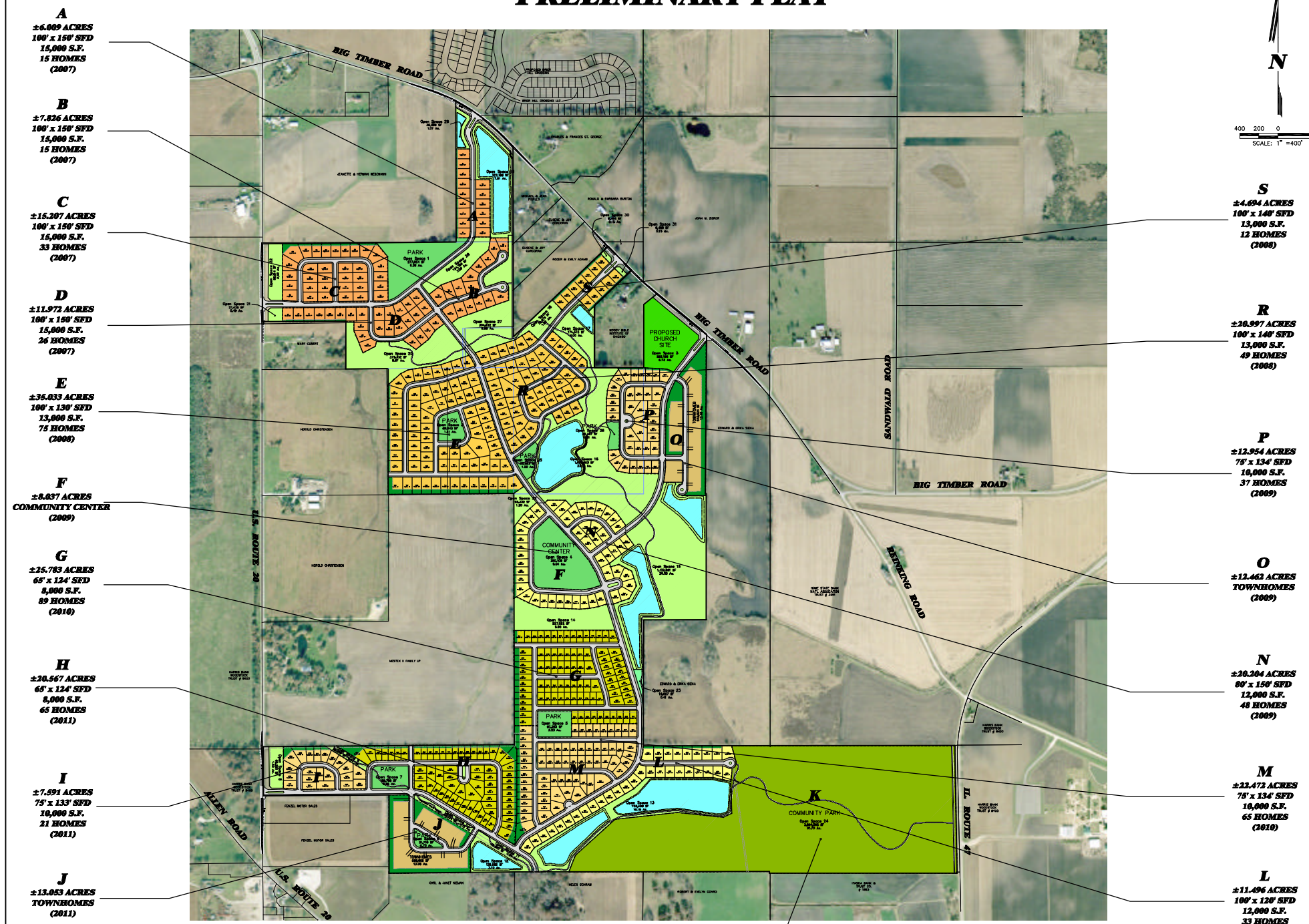


OAKSTEAD PRELIMINARY PLAT



- A**
±6.009 ACRES
100' x 150' SFD
15,000 S.F.
15 HOMES
(2007)
- B**
±7.826 ACRES
100' x 150' SFD
15,000 S.F.
15 HOMES
(2007)
- C**
±15.307 ACRES
100' x 150' SFD
15,000 S.F.
33 HOMES
(2007)
- D**
±11.973 ACRES
100' x 150' SFD
15,000 S.F.
26 HOMES
(2007)
- E**
±35.033 ACRES
100' x 130' SFD
13,000 S.F.
75 HOMES
(2008)
- F**
±8.037 ACRES
COMMUNITY CENTER
(2009)
- G**
±25.783 ACRES
65' x 124' SFD
8,000 S.F.
89 HOMES
(2010)
- H**
±20.567 ACRES
65' x 124' SFD
8,000 S.F.
64 HOMES
(2011)
- I**
±7.591 ACRES
75' x 133' SFD
10,000 S.F.
21 HOMES
(2011)
- J**
±13.063 ACRES
TOWNHOMES
(2011)

- S**
±4.694 ACRES
100' x 140' SFD
13,000 S.F.
12 HOMES
(2008)
- R**
±20.997 ACRES
100' x 140' SFD
13,000 S.F.
49 HOMES
(2008)
- P**
±12.954 ACRES
75' x 134' SFD
10,000 S.F.
37 HOMES
(2009)
- O**
±12.462 ACRES
TOWNHOMES
(2009)
- N**
±20.204 ACRES
80' x 150' SFD
12,000 S.F.
48 HOMES
(2009)
- M**
±22.473 ACRES
75' x 134' SFD
10,000 S.F.
65 HOMES
(2010)
- L**
±11.496 ACRES
100' x 120' SFD
12,000 S.F.
33 HOMES
(2010)

LEGEND

- SINGLE FAMILY LOTS, MIN. 15,000 S.F.
- SINGLE FAMILY LOTS, MIN. 13,000 S.F.
- SINGLE FAMILY LOTS, MIN. 12,000 S.F.
- SINGLE FAMILY LOTS, MIN. 10,000 S.F.
- SINGLE FAMILY LOTS, MIN. 8,000 S.F.
- TOWNHOME AREA
- CHURCH SITE
- NEIGHBORHOOD PARKS/COMMUNITY CENTER
- PUBLIC OPEN SPACE
- PRIVATE OPEN SPACE/BUFFERS
- COMMUNITY PARK AREA
- PUBLIC USE/OPEN SPACE
- STORMWATER MANAGEMENT FACILITY

SINGLE FAMILY RESIDENTIAL AREA SUMMARY

Neighborhood	# Homes	Planned Lot Size	Average Lot Size (Sq. Ft.)	Max Lot Size (Sq. Ft.)	Min Lot Size (Sq. Ft.)	Median Lot Size (Sq. Ft.)	Total Lot Area (Sq. Ft.)	Total Lot Area (Ac.)	Neighborhood Area (Ac.)
A	15	15,000	16,528	15,761	15,000	15,017	225,416	5.17	6.01
B	15	15,000	17,014	20,346	15,003	16,591	255,204	5.86	7.83
C	33	15,000	16,570	31,370	15,000	15,500	546,821	12.55	15.21
D	26	15,000	15,948	19,752	15,000	15,936	414,627	9.52	10.97
E	75	13,000	15,640	32,858	13,000	14,664	1,172,991	26.93	35.03
G	89	8,000	9,793	15,725	8,352	9,112	871,618	20.01	25.78
H	64	8,000	11,765	31,263	8,645	10,198	764,726	17.56	20.57
I	21	10,000	13,449	24,730	10,225	12,309	282,437	6.48	7.59
L	33	12,000	13,210	17,266	12,000	12,000	426,325	10.01	11.50
M	65	10,000	12,252	24,224	10,108	10,906	796,409	18.28	22.47
N	48	12,000	12,887	17,686	12,000	12,507	616,266	14.20	20.20
P	37	10,000	12,410	20,626	10,125	11,545	459,178	10.54	12.85
R	49	13,000	15,090	26,694	13,000	14,324	739,403	16.97	21.00
S	12	13,000	14,271	14,641	13,300	14,534	171,248	3.93	4.69
Total Single Family Homes	583		13,301	32,858	8,352	13,000	7,754,589	178.02	221.80

MULTI FAMILY RESIDENTIAL AREA SUMMARY

Neighborhood	# Homes	Neighborhood Area (Ac.)
J	120	13.08
O	108	12.46
Total Multi Family Homes	228	25.52

K
±91.783 ACRES
PARK
(2005)

Actual Single Family Lot Size (SF)	Actual # of Homes
8,000-10,000	77
10,000-12,000	116
12,000-15,000	208
15,000-20,000	162
20,000+	20
TOTAL	583

GENERAL NOTES AND LAND USE TABULATION

- TOTAL SITE AREA: 511.4 ACRES
- TOTAL RECREATION, OPEN, AND GREEN SPACE: 255.69 ACRES (50.00%)
 - A. COMMUNITY PARKS: 91.70 ACRES
 - B. NEIGHBORHOOD PARKS/COMMUNITY CENTER: 23.08 ACRES
 - C. PUBLIC USE OPEN SPACE: 0.41 ACRES
 - D. PRIVATE OPEN SPACE (DLOODPLAIN, BUFFERS, OUTLOTS, SWM): 115.59 ACRES
 - E. PRIVATE OPEN SPACE: 18.20 ACRES
- TOTAL RESIDENTIAL AREA: 247.32 ACRES
 - A. 15,000 SQUARE FOOT LOTS (100'x150'): 89 HOMES (10.97%)
 - B. 13,000 SQUARE FOOT LOTS (100'x130'): 136 HOMES (16.77%)
 - C. 12,000 SQUARE FOOT LOTS (100'x120'): 81 HOMES (10.96%)
 - D. 10,000 SQUARE FOOT LOTS (75'x135'): 123 HOMES (15.17%)
 - E. 8,000 SQUARE FOOT LOTS (65'x124'): 154 HOMES (18.99%)
 - F. TOWNHOMES: 228 HOMES (28.11%)
 - G. TOTAL HOMES: 811 HOMES
- CHURCH SITE: 6.73 ACRES
- PUBLIC ROADWAY DEDICATION: 67.63 ACRES
- GROSS DENSITY: 1.59 DU/Acre



PREPARED BY:
CEMCON, Ltd.
Consulting Engineers, Land Surveyors & Planners
2280 WHITE OAK CIRCLE, SUITE 100
AURORA, ILLINOIS 60504-9675
PH: (630) 882-2100 FAX: (630) 882-2199
e-mail: ccd@cemcon.com

DISC NO.: 456209 FILE NAME: Pre_LotDisc
DRAWN BY: KMS FLD BK. / PG. NO.: N/A
COMPLETION DATE: 09-24-04 JOB NO.: 456.209
10-21-04/KMS
12-17-04/KMS REV. PER E.E.I. REVIEW LETTER DATED 11-02-04
& CROWN COMMUNITY DEVELOPMENT REVIEW
2-10-05/KMS REV. PER E.E.I. REVIEW LETTER DATED 1-31-05

Copyright © 2004 Cemcon, Ltd. All rights reserved.