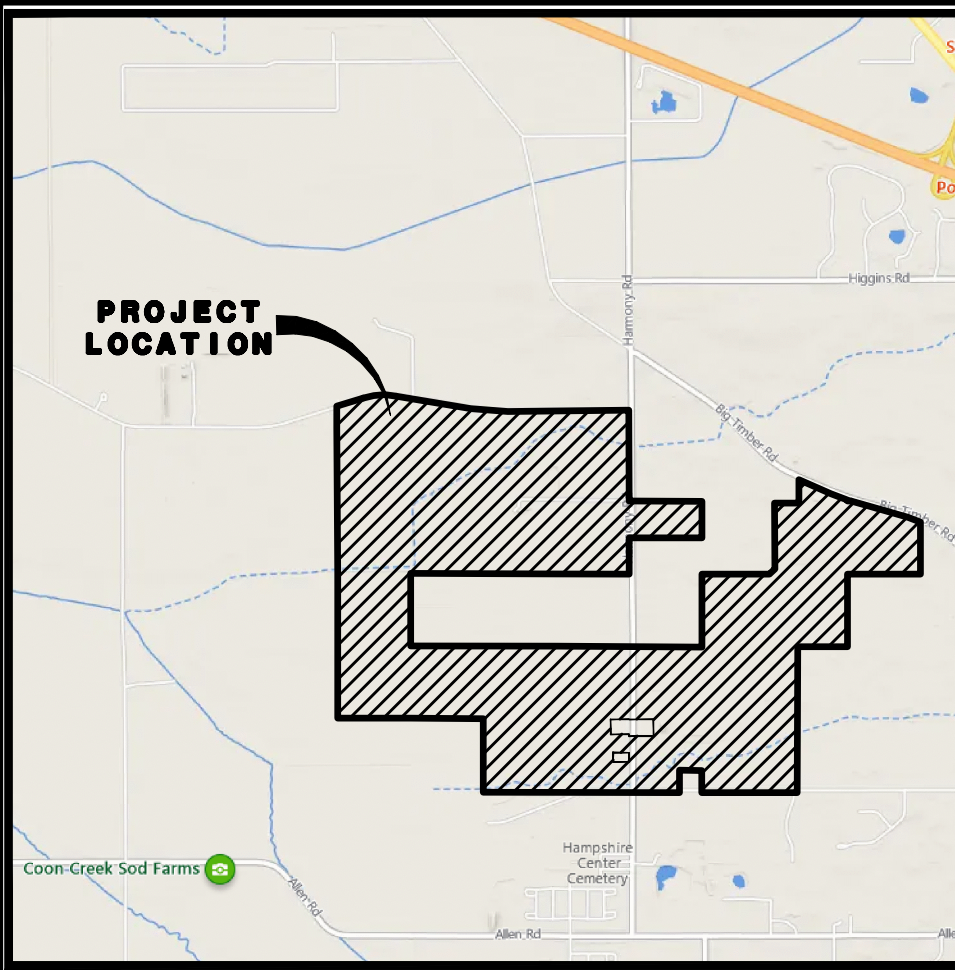


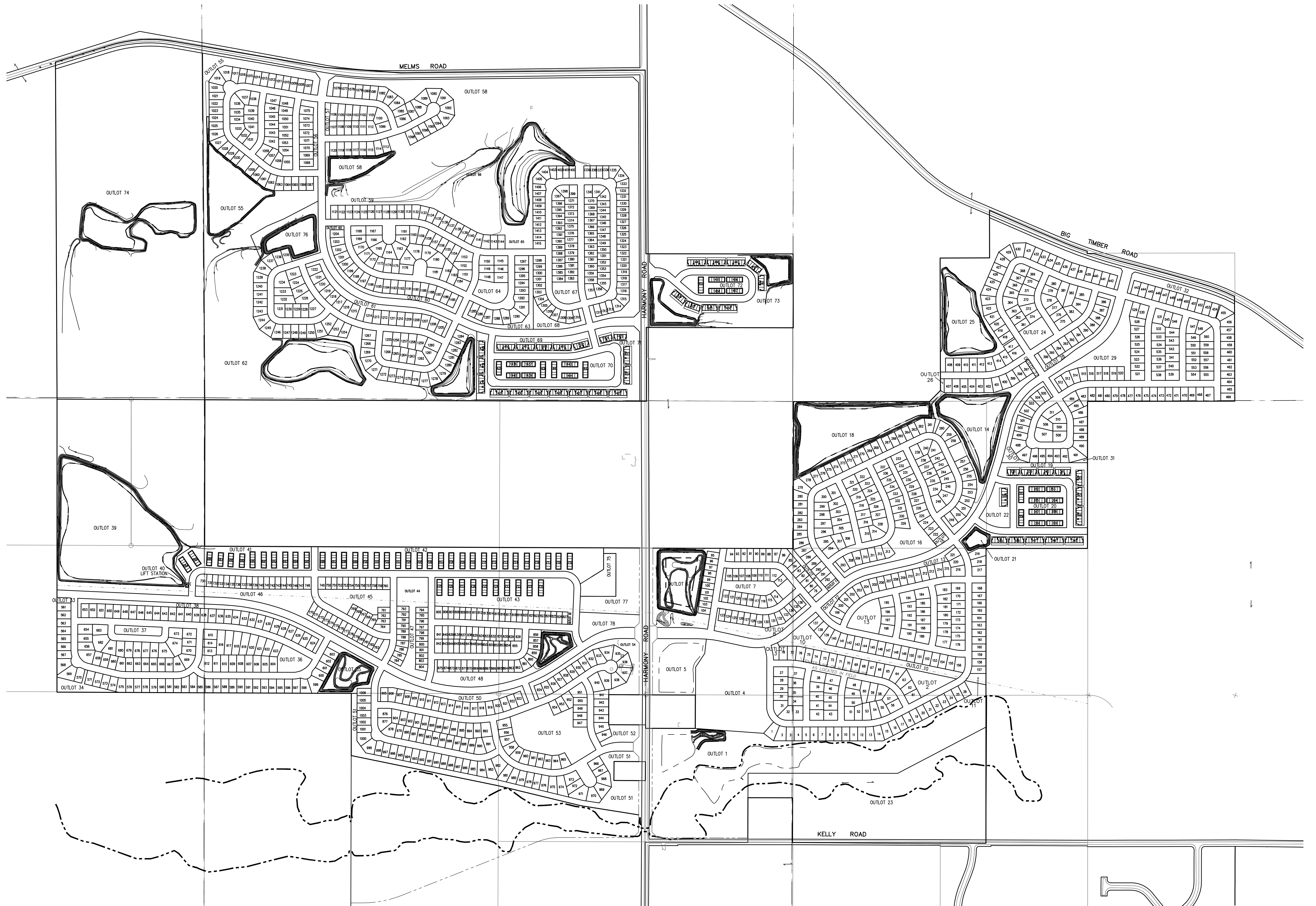
# PRELIMINARY ENGINEERING PLAN FOR PRAIRIE RIDGE NORTH



**LOCATION MAP**



400 200 0 400  
SCALE: 1 INCH = 400 FEET



**NOTES:**

LIMITS OF 100-YR FLOODPLAIN ARE DEPICTED PER PRAIRIE RIDGE DRAINAGE EVALUATION PREPARED BY CEMCON LTD. ON BEHALF OF CROWN COMMUNITY DEVELOPMENT.

ON-SITE TOPOGRAPHIC SURVEY PREPARED BY COWHEY, GUDMUNDSON, LEDER, INC. ON BEHALF OF KANE COUNTY ASSOCIATES.

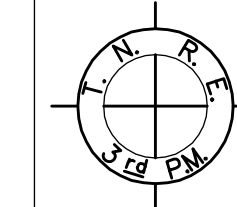
OFF-SITE TOPOGRAPHIC SURVEY DATA PROVIDED BY SIDWELL CORPORATION ON BEHALF OF KANE COUNTY.

INDIVIDUAL WATER AND SANITARY SEWER SERVICE WILL BE PROVIDED FOR EACH TOWNHOME UNIT.

ALL EXISTING FIELD DRAINAGE TILE ENCOUNTERED OR DAMAGED DURING CONSTRUCTION ARE TO BE RESTORED TO THEIR ORIGINAL CONDITION, PROPERLY REROUTED AND/OR CONNECTED TO THE STORM SEWER SYSTEM. ALL LOCATIONS OF ENCOUNTERED FIELD DRAINAGE TILE SHALL BE PROPERLY REFERENCED AND DOCUMENTED FOR INCORPORATION INTO THE RECORD DRAWING.

**LINE LEGEND**

- SUBDIVISION BOUNDARY LINE (Heavy Solid Line)
- LOT LINE/PROPERTY LINE (Solid Line)
- - - EXISTING CORPORATE LIMITS OF THE CITY OF NAPERVILLE (Heavy Dashed Line)
- - - BUILDING LINE (Long Dashed Lines)
- - - EASEMENT LINE/LIMITS OF EASEMENT (Short Dashed Lines)
- - - CENTERLINE (Single Dashed Lines)
- - - QUARTER SECTION LINE (Double Dashed Lines)
- - - SECTION LINE (Triple Dashed Lines)
- - - APPROX. SCALED LIMITS OF ZONE A AS SHOWN ON WILL COUNTY FIRM.



SECTION CORNER OR QUARTER SECTION CORNER

**LOT DIMENSIONS & AREAS ARE APPROXIMATIONS & WILL VARY AT TIME OF FINAL PLATTING.**

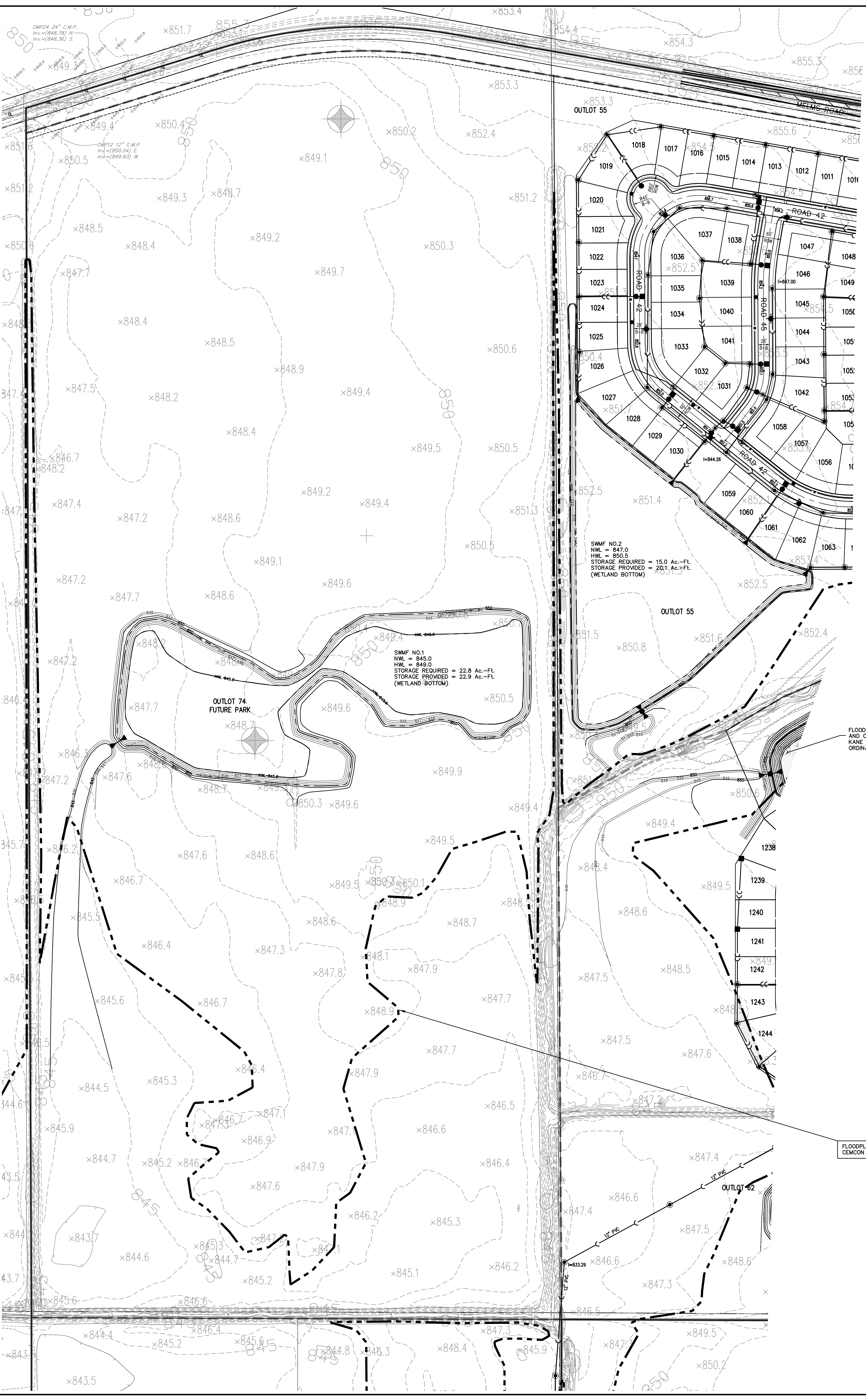
PREPARED FOR:  
**HAMPSHIRE WEST LLC**  
1751 A WEST DIEHL ROAD  
NAPERVILLE, ILLINOIS 60563  
(630) 851-5490

PREPARED BY:  
**CEMCON, Ltd.**

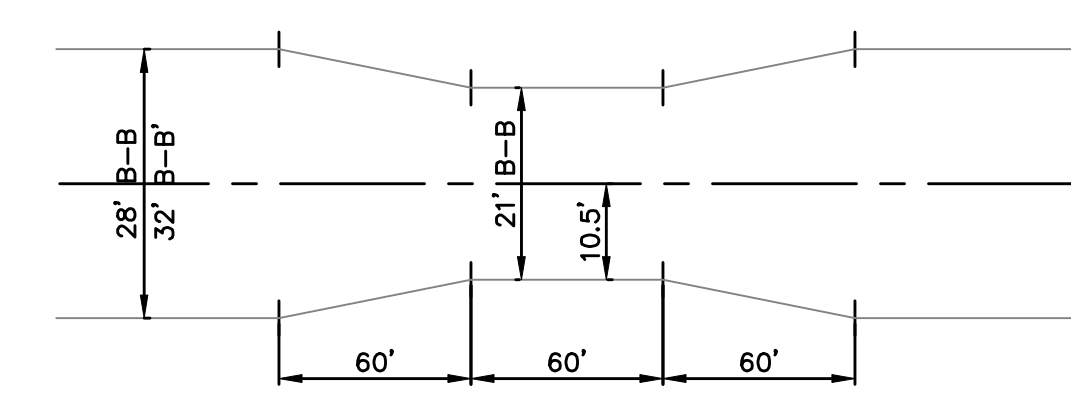
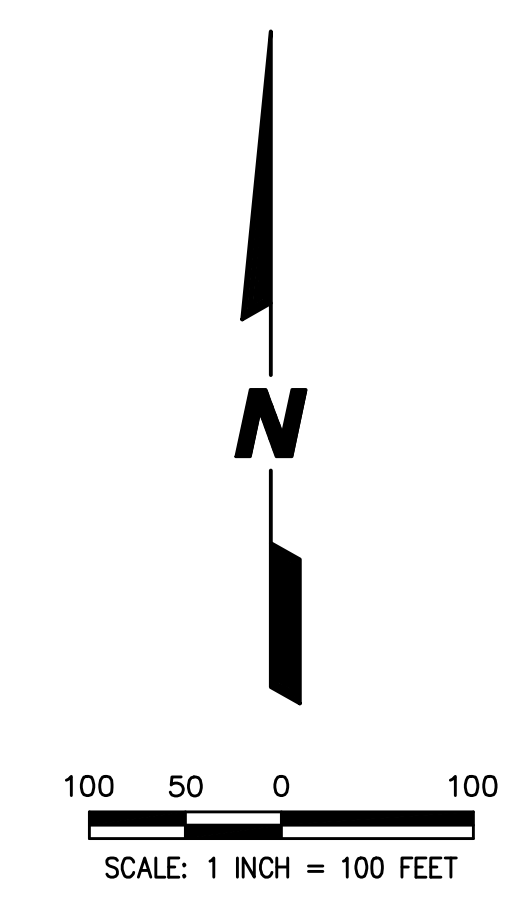
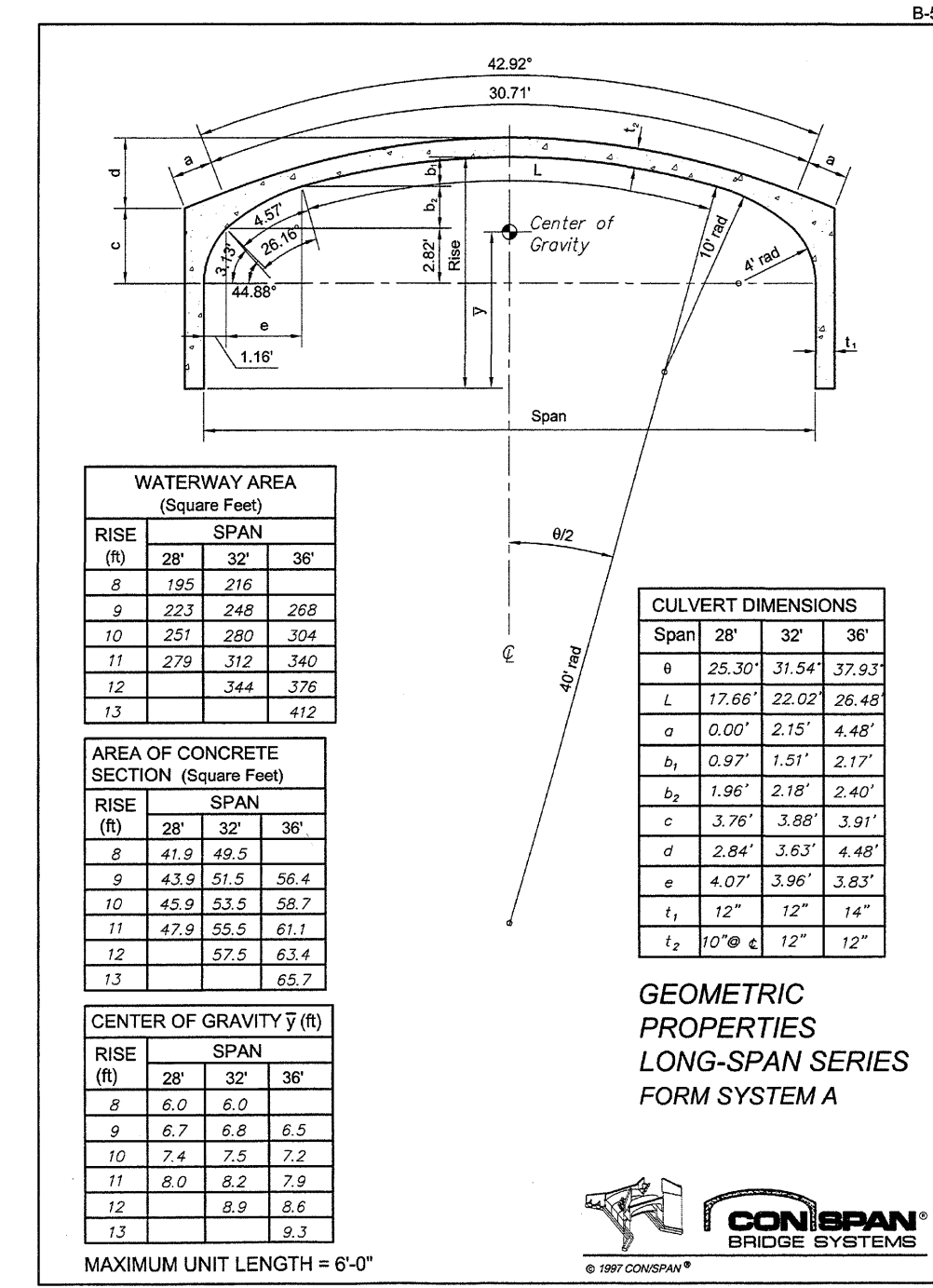
Consulting Engineers, Land Surveyors & Planners  
2280 White Oak Circle, Suite 100  
Aurora, Illinois 60502-9675  
PH: 630.862.2100 FAX: 630.862.2199  
E-Mail: info@cemcon.com Website: www.cemcon.com

DISC NO.: 456275 FILE NAME: PREENG  
DRAWN BY: KMS FLD. BK. / PG. NO.: -----  
COMPLETION DATE: 12-14-22 JOB NO.: 456.275  
REV: 02-01-23/LAL PROJECT MANAGER : MAM  
REV: 02-10-23/LAL  
REV: 03-13-23/MAM

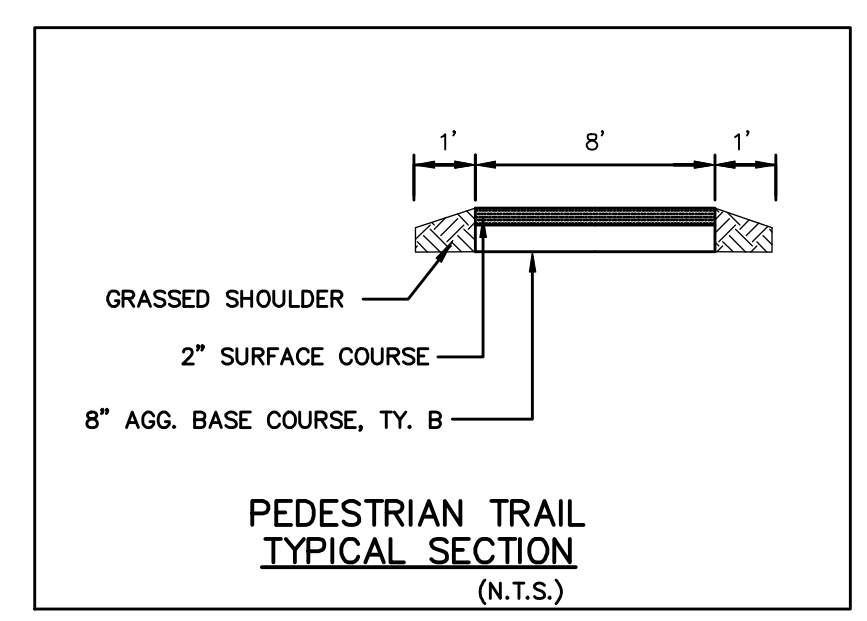
DRAWING PAK: P:\162670\DWG\DRAWINGS\PRELIMINARY\PRELIM2.DWG  
DATE: 02/13/2023 BY: KRISTIN STANSEL



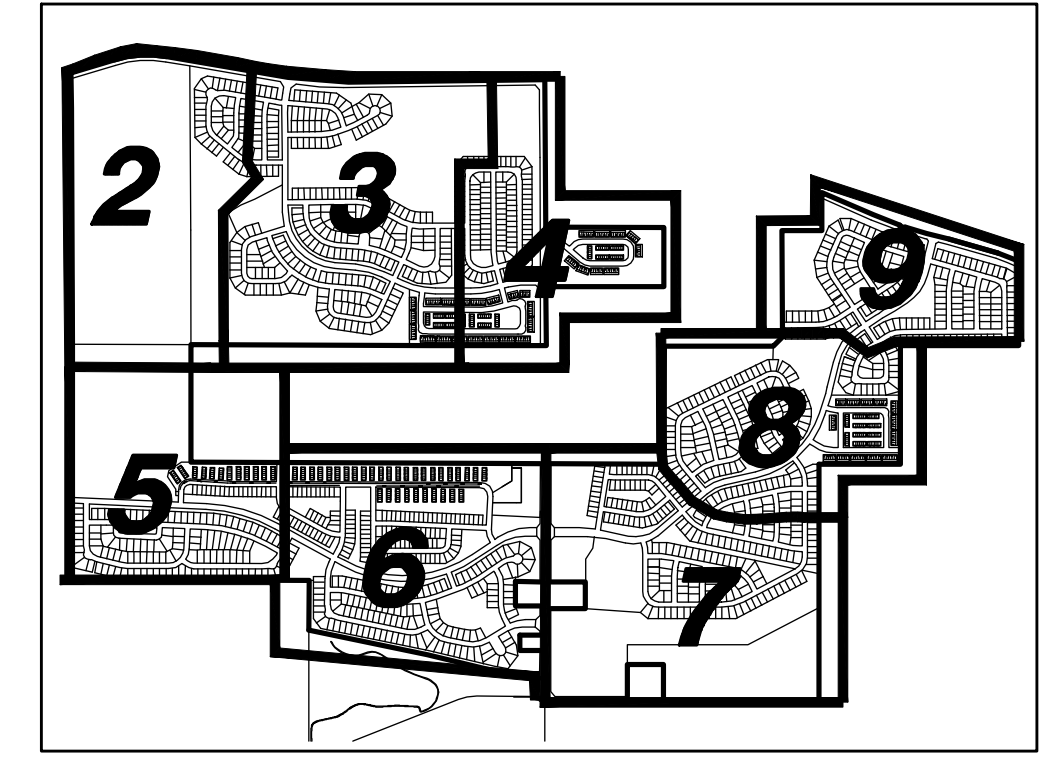
28' x 8' CONSPAN BRIDGE DETAIL



THROTTLED PAVEMENT SECTION (TRAFFIC CALMING) (N.T.S.)



PEDESTRIAN TRAIL TYPICAL SECTION (N.T.S.)  
(SEE SHEET XX FOR ROADWAY TYPICAL SECTIONS)



KEYMAP

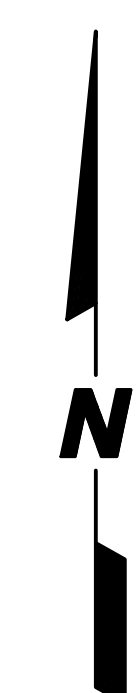
**LEGEND**

EXISTING	PROPOSED	DESCRIPTION
○	●	MANHOLE
□	■	CATCH BASIN
○	●	INLET
○	●	CLEANOUT
○	●	SLOPE INLET BOX
○	●	HEADWALL
○	●	END SECTION
○	●	STORM SEWER
○	●	SANITARY SEWER
○	●	FORCEMAIN
○	●	WATERMAIN
○	●	VALVE & BOX
○	●	WATER VALVE IN VAULT
○	●	FIRE HYDRANT
○	●	CONTOURS
○	●	ELEVATIONS
○	●	STREET LIGHT
○	●	WATERMAIN PROTECTION
○	●	SILT FENCE INLET PROTECTOR
○	●	TEMPORARY STRAW BALE DITCH CHECK
○	●	SILT FENCE DITCH CHECK
○	●	RIP-RAP
○	●	OVERFLOW ROUTE
○	●	FLOODPLAIN LIMITS PER CEMCON LTD. STUDY

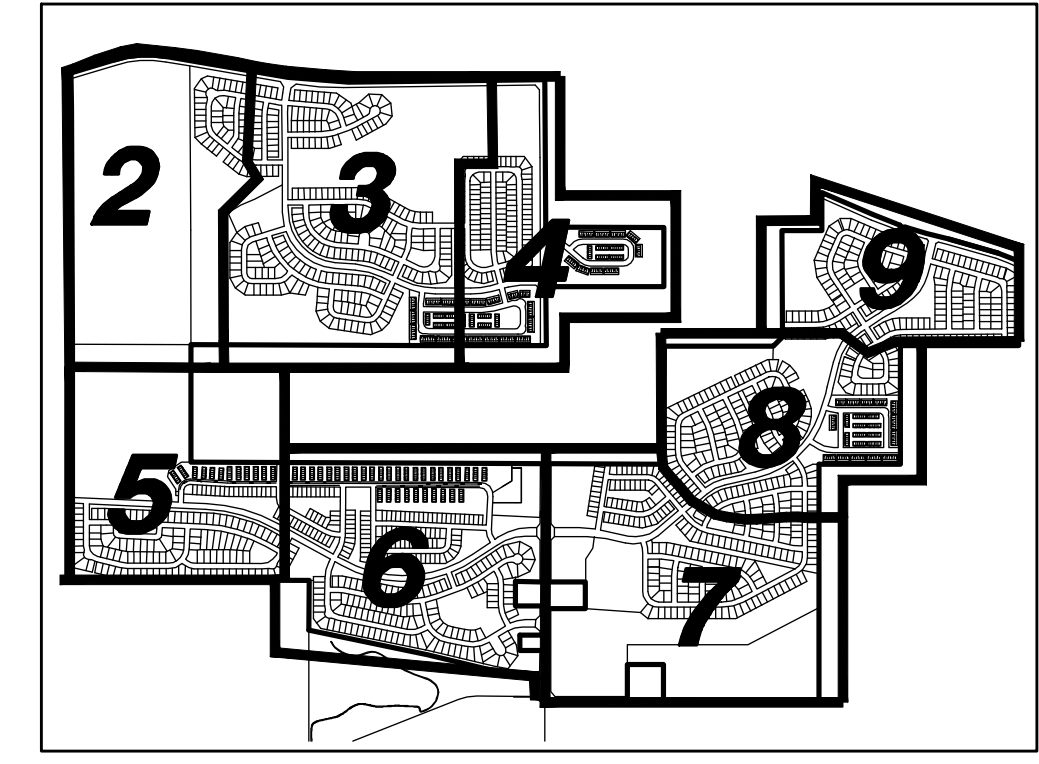
PREPARED FOR:  
**HAMPSHIRE WEST LLC**  
 1751 A WEST DIEHL ROAD  
 NAPERVILLE, ILLINOIS 60563  
 (630) 851-5490

PREPARED BY:  
**CEMCON, Ltd.**  
 Consulting Engineers, Land Surveyors & Planners  
 2280 White Oak Circle, Suite 100  
 Aurora, Illinois 60502-9675  
 PH: 630.862.2100 FAX: 630.862.2199  
 E-Mail: info@cemcon.com Website: www.cemcon.com

DISC NO.: 456275 FILE NAME: PREENG  
 DRAWN BY: KMS FLD. BK. / PG. NO.: -----  
 COMPLETION DATE: 12-14-22 JOB NO.: 456.275  
 XREF: PROJECT MANAGER: MAM  
 REV: 02-01-23/LAL



100 50 0 100  
SCALE: 1 INCH = 100 FEET



KEYMAP

LEGEND

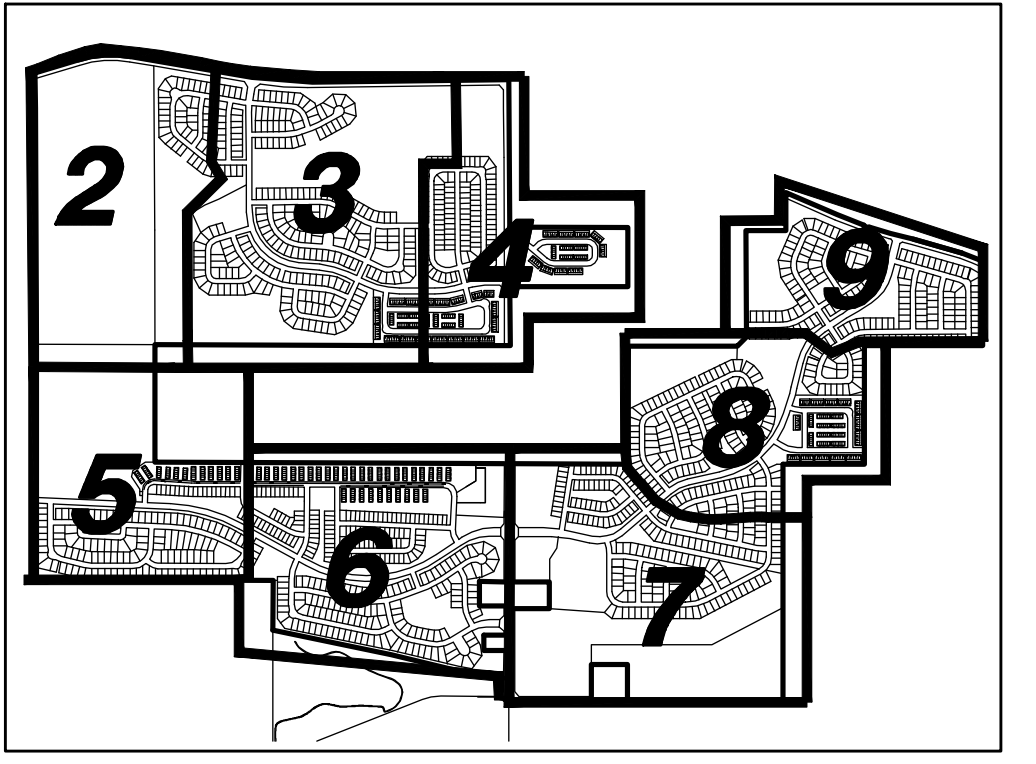
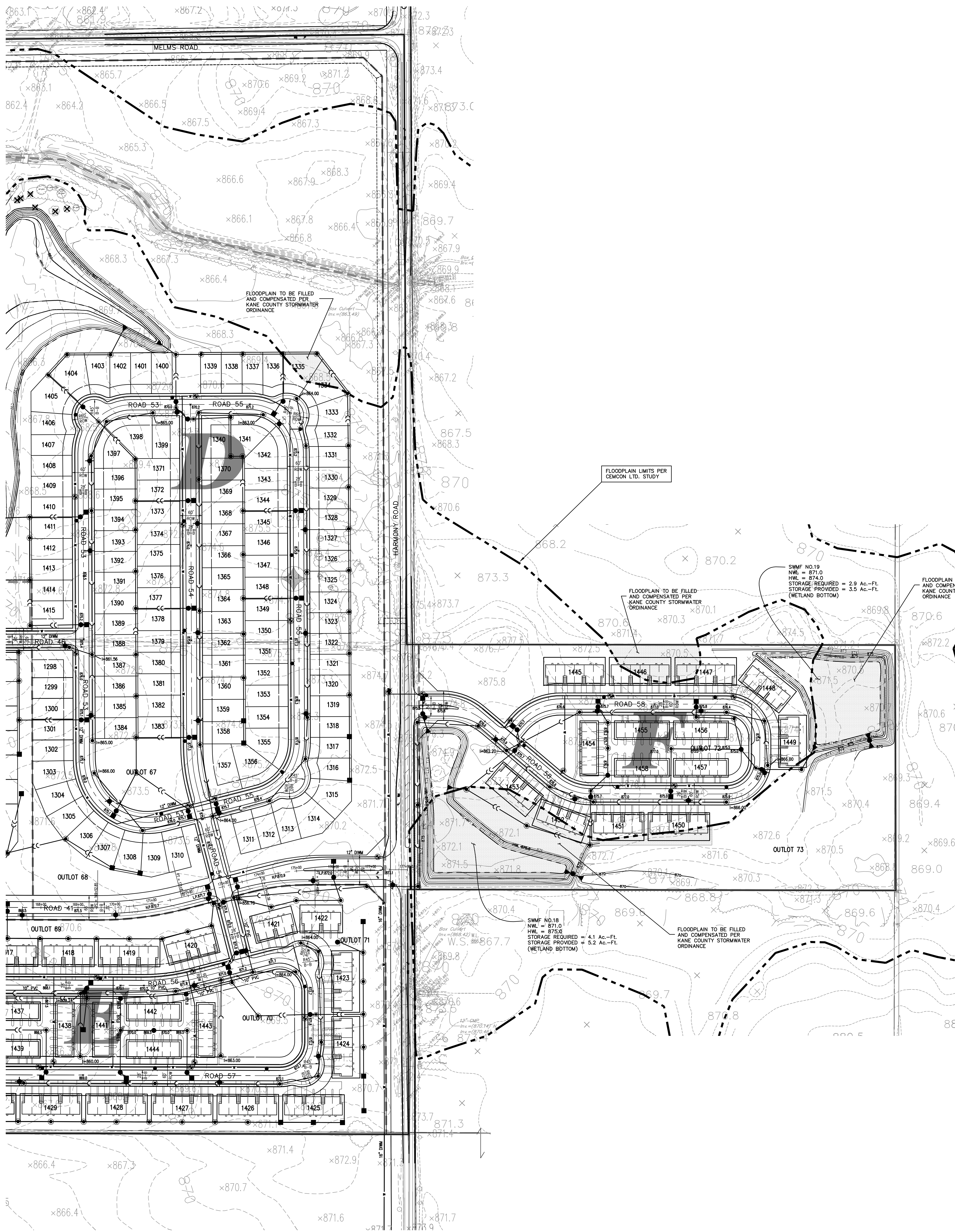
EXISTING	PROPOSED	DESCRIPTION
		MANHOLE
		CATCH BASIN
		INLET
		CLEANOUT
		SLOPE INLET BOX
		HEADWALL
		END SECTION
		STORM SEWER
		SANITARY SEWER
		FORCEMAIN
		WATERMAIN
		VALVE & BOX
		WATER VALVE IN VAULT
		FIRE HYDRANT
		CONTOURS
		ELEVATIONS
		STREET LIGHT
		WATERMAIN PROTECTION
		SILT FENCE INLET PROTECTOR
		TEMPORARY STRAW BALE DITCH CHECK
		SILT FENCE DITCH CHECK
		RIP-RAP
		OVERFLOW ROUTE
		FLOODPLAIN LIMITS PER CEMCON LTD. STUDY

PREPARED FOR:  
HAMPSHIRE WEST LLC  
1751 A WEST DIEHL ROAD  
NAPERVILLE, ILLINOIS 60563  
(630) 851-5490

PREPARED BY:  
**CEMCON, Ltd.**  
Consulting Engineers, Land Surveyors & Planners  
2280 White Oak Circle, Suite 100  
Aurora, Illinois 60502-9675  
PH: 630.862.2100 FAX: 630.862.2199  
E-Mail: info@cemcon.com Website: www.cemcon.com  
DISC NO.: 456275 FILE NAME: PREENG  
DRAWN BY: KMS FLD. BK. / PG. NO.: ----  
COMPLETION DATE: 12-14-22 JOB NO.: 456.275  
XREF: PROJECT MANAGER: MAM  
REV: 02-01-23/LAL



100 50 0 100  
SCALE: 1 INCH = 100 FEET



KEYMAP

**LEGEND**

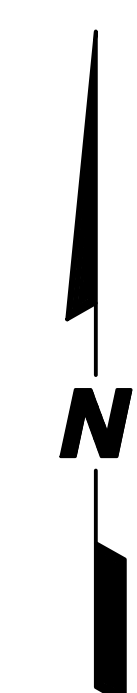
EXISTING	PROPOSED	DESCRIPTION
		MANHOLE
		CATCH BASIN
		INLET
		CLEANOUT
		SLOPE INLET BOX
		HEADWALL
		END SECTION
		STORM SEWER
		SANITARY SEWER
		FORCEMAIN
		WATERMAIN
		VALVE & BOX
		WATER VALVE IN VAULT
		FIRE HYDRANT
		CONTOURS
		ELEVATIONS
		STREET LIGHT
		WATERMAIN PROTECTION
		SILT FENCE INLET PROTECTOR
		TEMPORARY STRAW BALE DITCH CHECK
		SILT FENCE DITCH CHECK
		RIP-RAP
		OVERFLOW ROUTE
		FLOODPLAIN LIMITS PER CEMCON LTD. STUDY

PREPARED FOR:  
 HAMPSHIRE WEST LLC  
 1751 A WEST DIEHL ROAD  
 NAPERVILLE, ILLINOIS 60563  
 (630) 851-5490

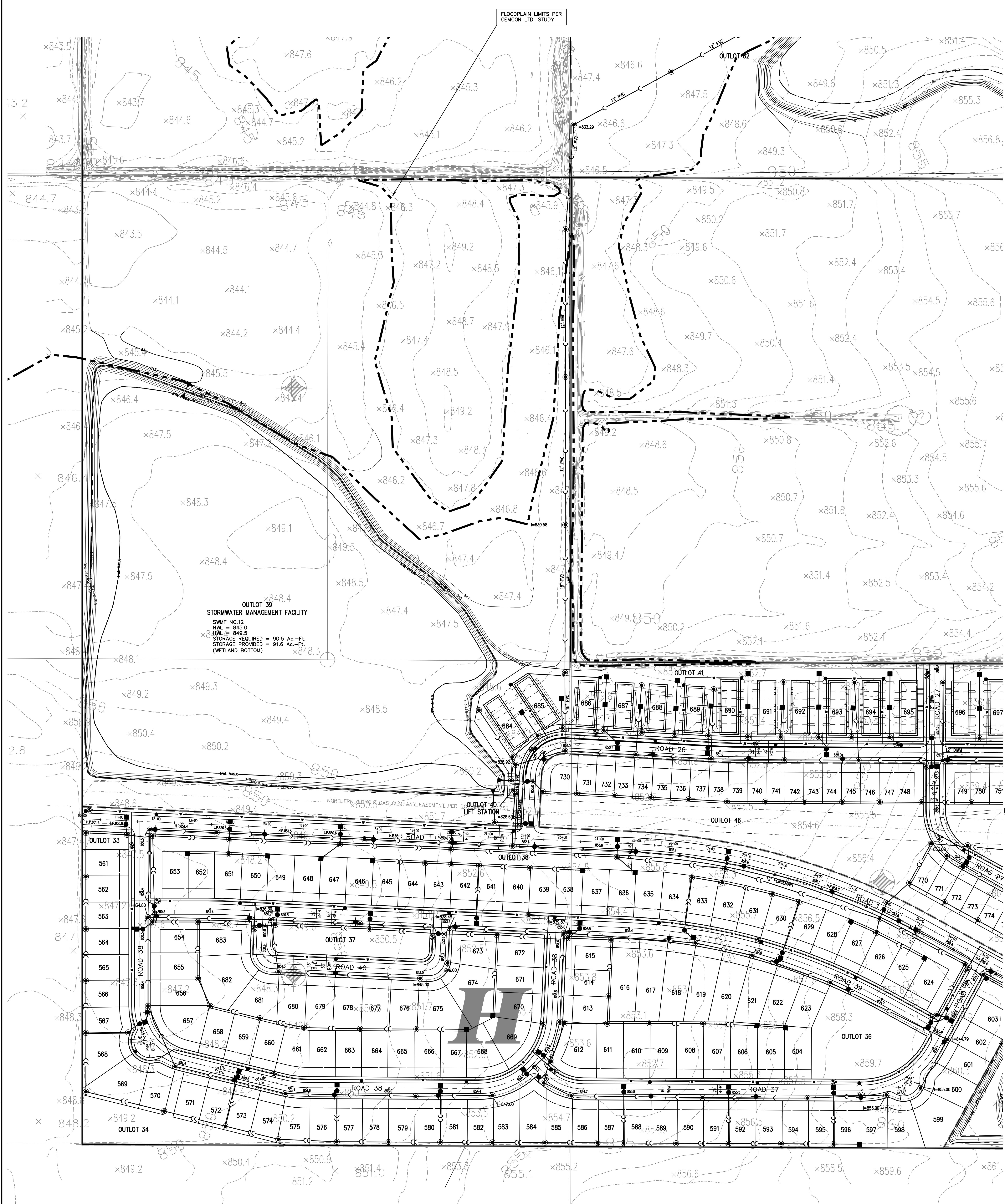
PREPARED BY:  
**CEMCON, Ltd.**  
 Consulting Engineers, Land Surveyors & Planners  
 2280 White Oak Circle, Suite 100  
 Aurora, Illinois 60502-9675  
 PH: 630.862.2100 FAX: 630.862.2199  
 E-Mail: info@cemcon.com Website: www.cemcon.com

DISC NO.: 456275 FILE NAME: PREENG  
 DRAWN BY: KMS FLD. BK. / PG. NO.: ----  
 COMPLETION DATE: 12-14-22 JOB NO.: 456.275  
 XREF: PROJECT MANAGER: MAM  
 REV: 02-01-23/LAL

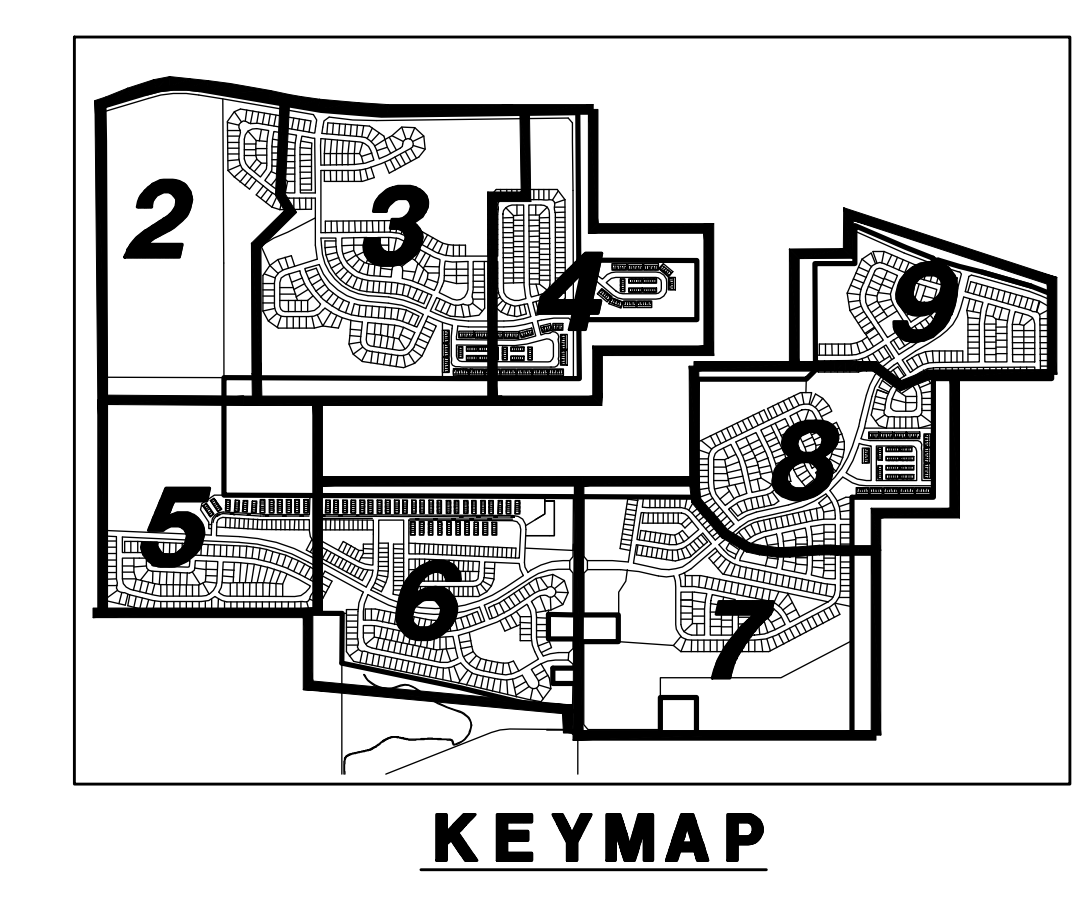
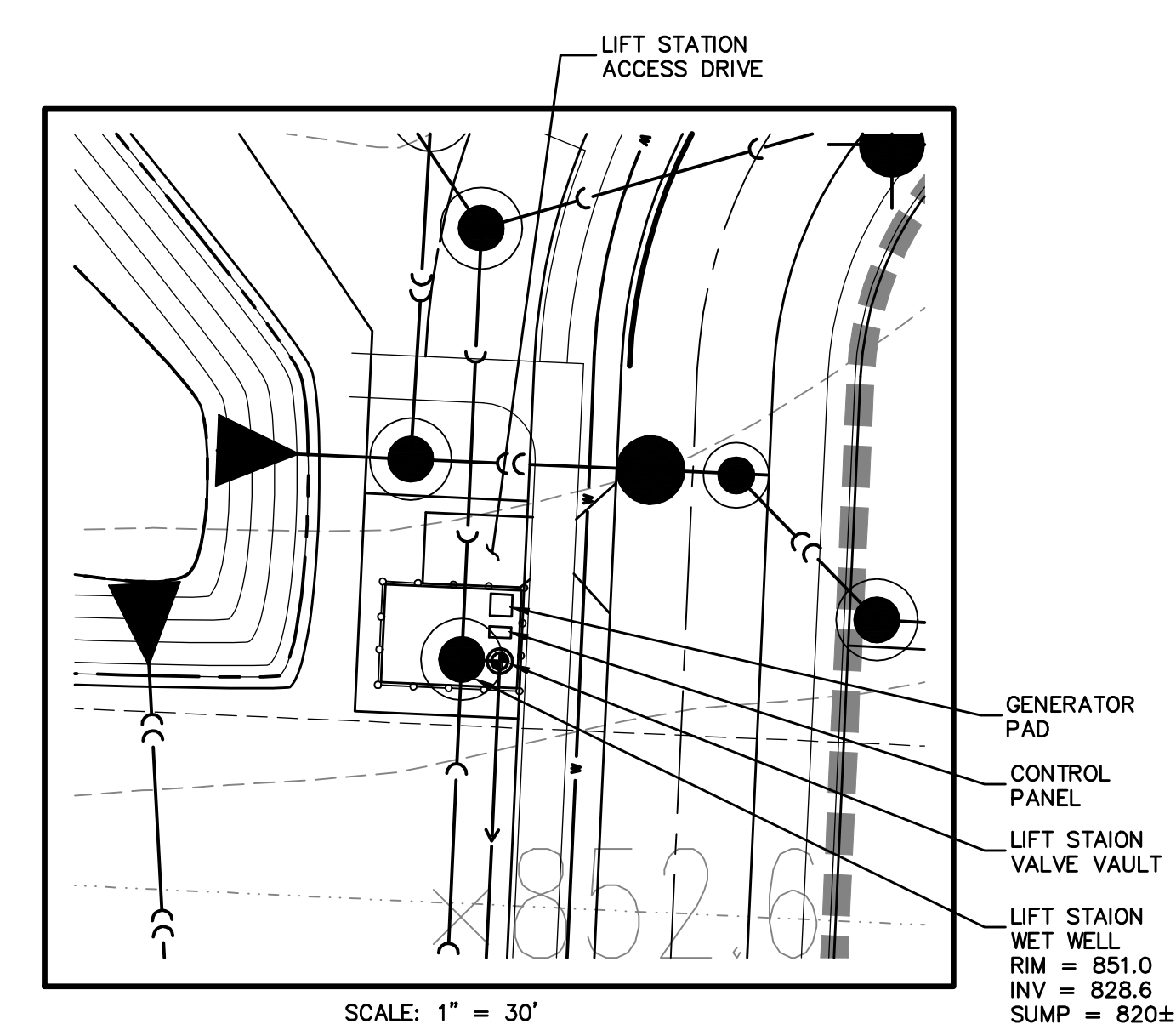
PLT FILE CREATED: 3/17/2023 BY: KRISTIN STANSEL DRAWING PATH: P:\2023\2023\DRAWINGS\PRELIMINARY\PRELIM.DWG



100 50 0 100  
SCALE: 1" = 100 FEET



**OUTLET 39  
STORMWATER MANAGEMENT FACILITY**  
SWMF NO. 12  
NWL = 845.0  
HWL = 849.5  
STORAGE REQUIRED = 90.5 AC-FT.  
STORAGE PROVIDED = 91.6 AC-FT.  
(WETLAND BOTTOM)



**KEYMAP**

**LEGEND**

EXISTING	PROPOSED	DESCRIPTION
○	●	MANHOLE
□	■	CATCH BASIN
○	●	INLET
○	●	CLEANOUT
○	●	SLOPE INLET BOX
○	●	HEADWALL
○	●	END SECTION
○	●	STORM SEWER
○	●	SANITARY SEWER
○	●	FORCEMAIN
○	●	WATERMAIN
○	●	VALVE & BOX
○	●	WATER VALVE IN VAULT
○	●	FIRE HYDRANT
○	●	CONTOURS
○	●	ELEVATIONS
○	●	STREET LIGHT
○	●	WATERMAIN PROTECTION
○	●	SILT FENCE INLET PROTECTOR
○	●	TEMPORARY STRAW BALE DITCH CHECK
○	●	SILT FENCE DITCH CHECK
○	●	RIP-RAP
○	●	OVERFLOW ROUTE
○	●	FLOODPLAIN LIMITS PER CEMCON LTD. STUDY

PREPARED FOR:  
**HAMPSHIRE WEST LLC**  
1751 A WEST DIEHL ROAD  
NAPERVILLE, ILLINOIS 60563  
(630) 851-5490

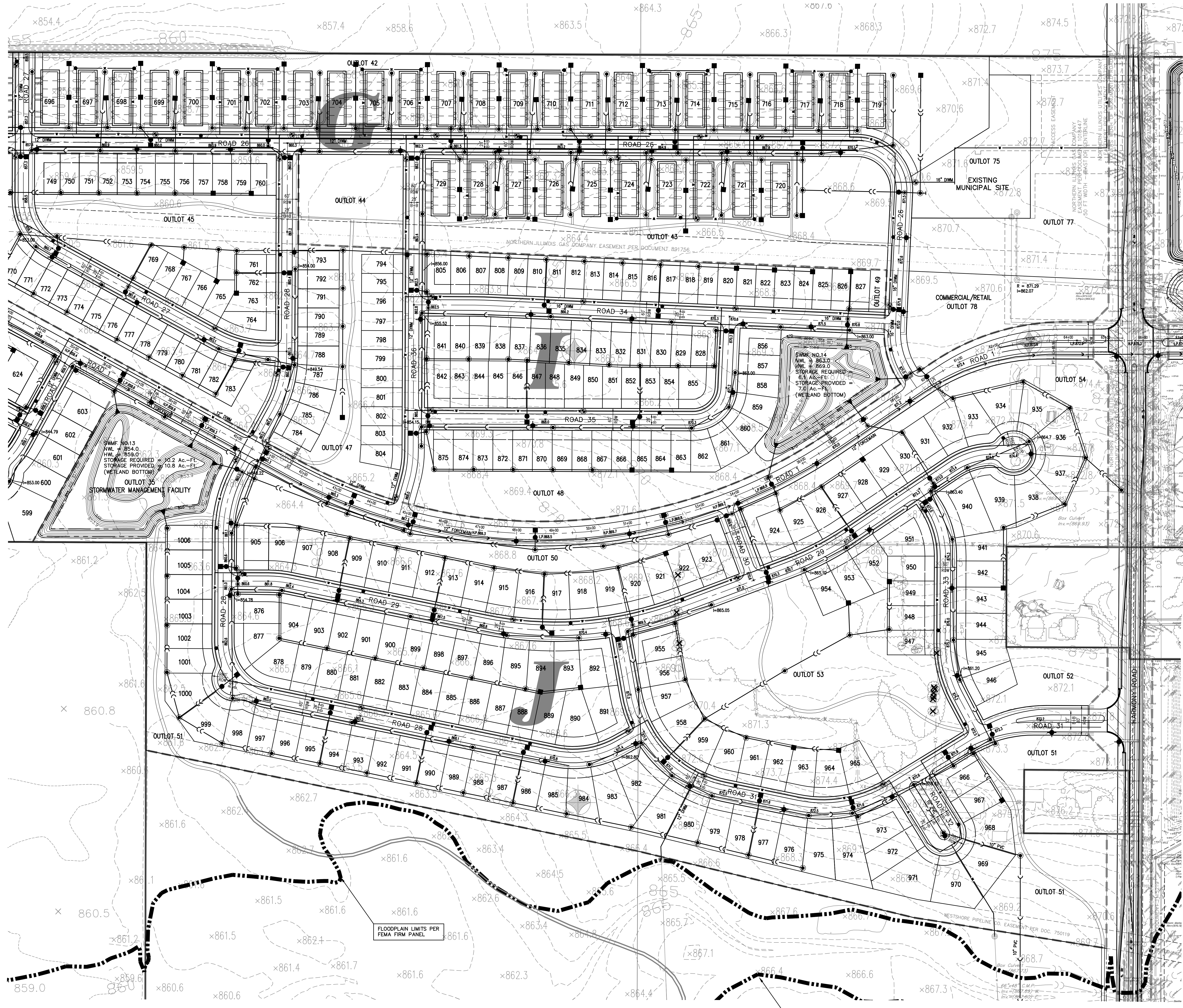
PREPARED BY:  
**CEMCON, Ltd.**  
Consulting Engineers, Land Surveyors & Planners  
2280 White Oak Circle, Suite 100  
Aurora, Illinois 60502-9675  
PH: 630.862.2100 FAX: 630.862.2199  
E-Mail: info@cemcon.com Website: www.cemcon.com

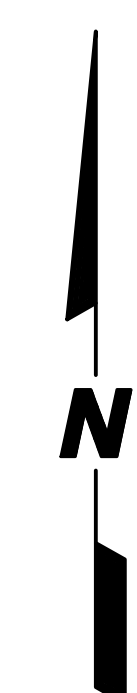
DISC NO.: 456275 FILE NAME: PREENG  
DRAWN BY: KMS FLD. BK. / PG. NO.: ----  
COMPLETION DATE: 12-14-22 JOB NO.: 456.275  
XREF: PROJECT MANAGER: MAM  
REV: 02-01-23/LAL

PLT FILE CREATED: 5/17/2023 BY: KRISTIN STANSEL

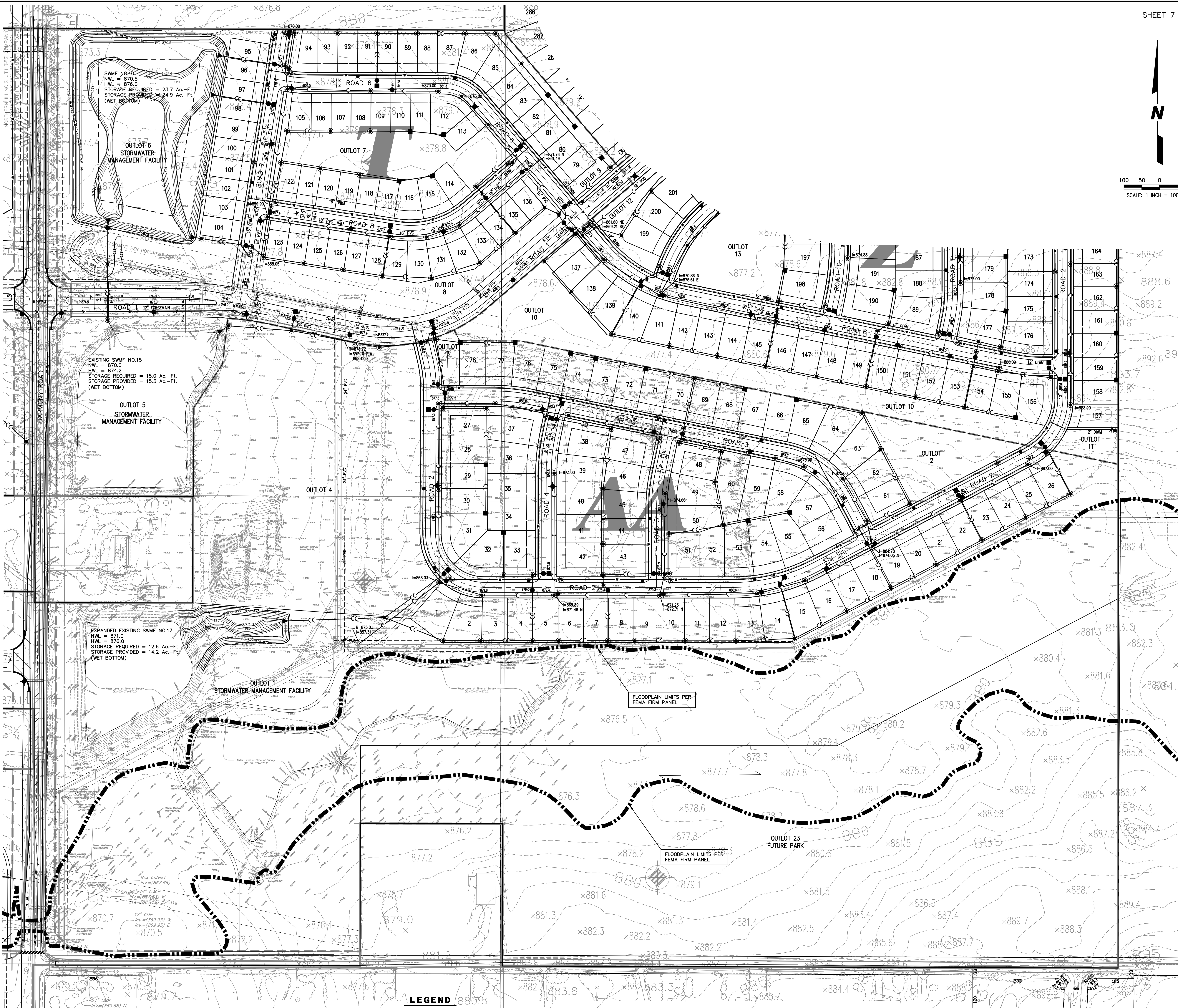


100 50 0 100  
SCALE: 1 INCH = 100 FEET



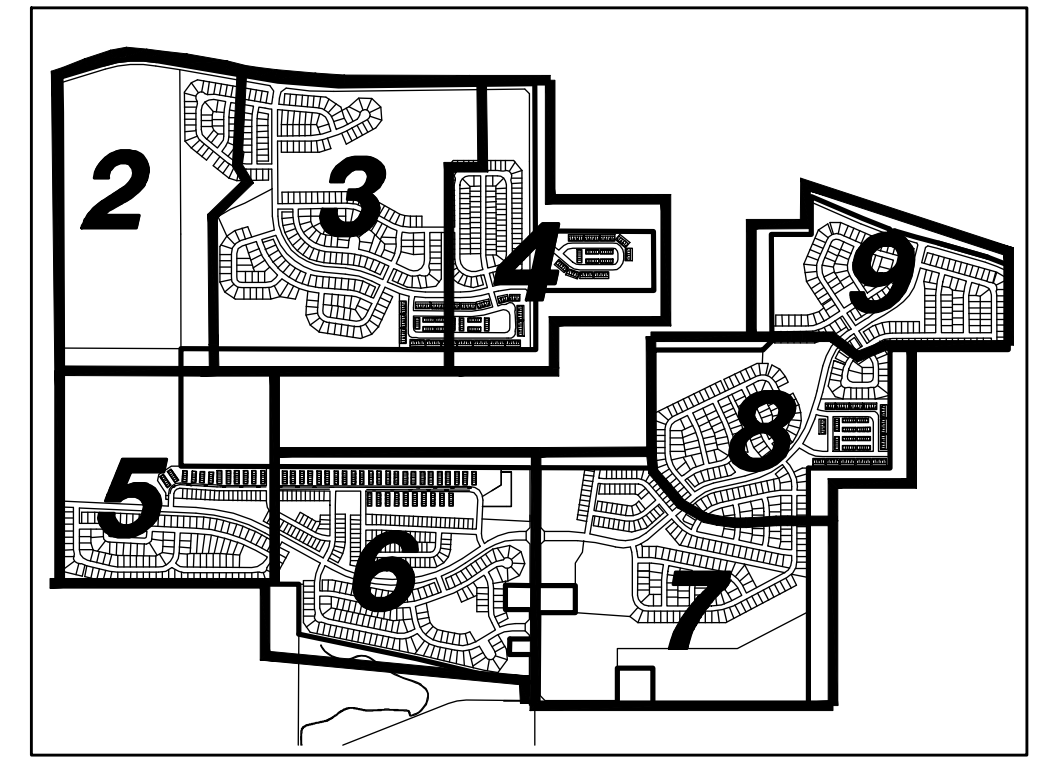


100 50 0 100  
SCALE: 1 INCH = 100 FEET



**LEGEND**

EXISTING	PROPOSED	DESCRIPTION
		MANHOLE
		CATCH BASIN
		INLET
		CLEANOUT
		SLOPE INLET BOX
		HEADWALL
		END SECTION
		STORM SEWER
		SANITARY SEWER
		FORCEMAIN
		WATERMAIN
		VALVE & BOX
		WATER VALVE IN VAULT
		FIRE HYDRANT
		CONTOURS
		ELEVATIONS
		STREET LIGHT
		WATERMAIN PROTECTION
		SILT FENCE INLET PROTECTOR
		TEMPORARY STRAW BALE DITCH CHECK
		SILT FENCE DITCH CHECK
		RIP-RAP
		OVERFLOW ROUTE
		FLOODPLAIN LIMITS PER CEMCON LTD. STUDY



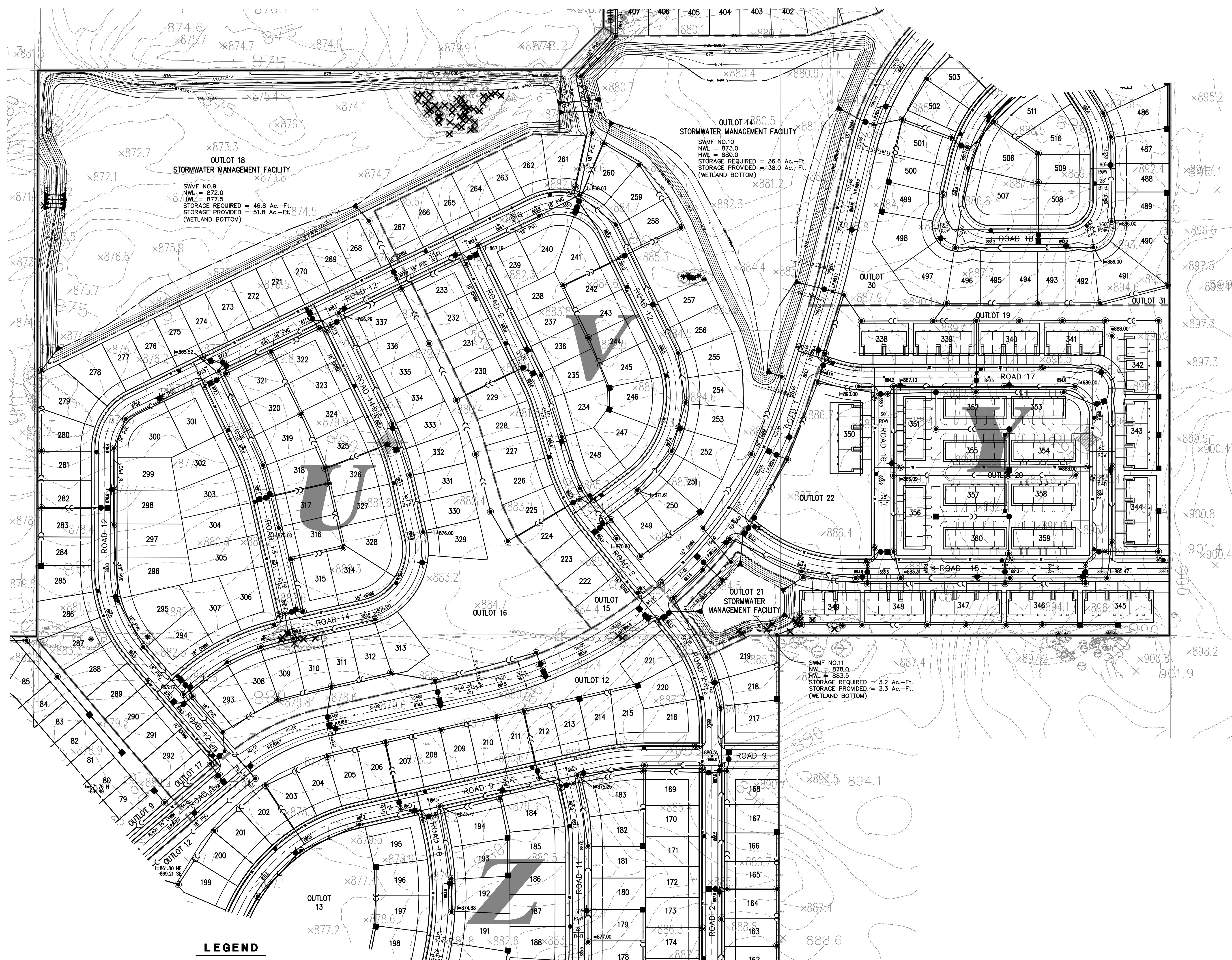
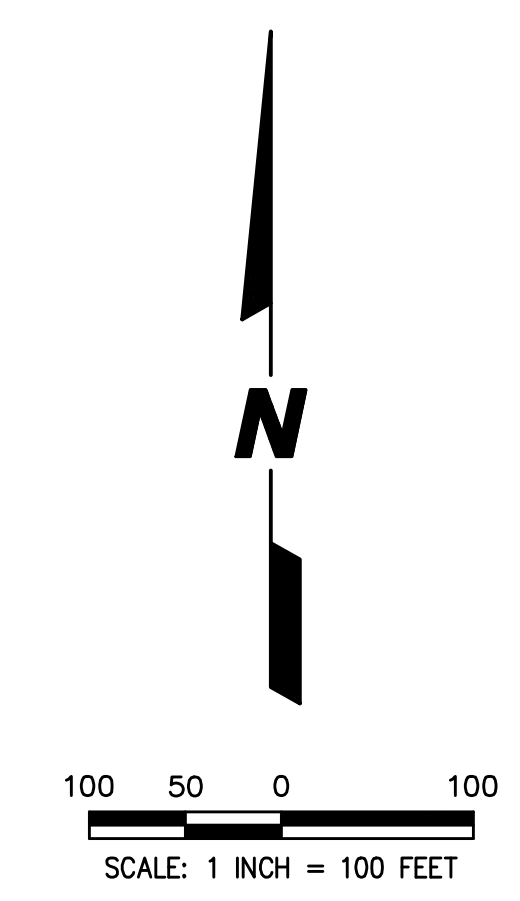
**KEYMAP**

PREPARED FOR:  
HAMPSHIRE WEST LLC  
1751 A WEST DIEHL ROAD  
NAPERVILLE, ILLINOIS 60563  
(630) 851-5490

PREPARED BY:  
**CEMCON, Ltd.**  
Consulting Engineers, Land Surveyors & Planners  
2280 White Oak Circle, Suite 100  
Aurora, Illinois 60502-9675  
PH: 630.862.2100 FAX: 630.862.2199  
E-Mail: info@cemcon.com Website: www.cemcon.com

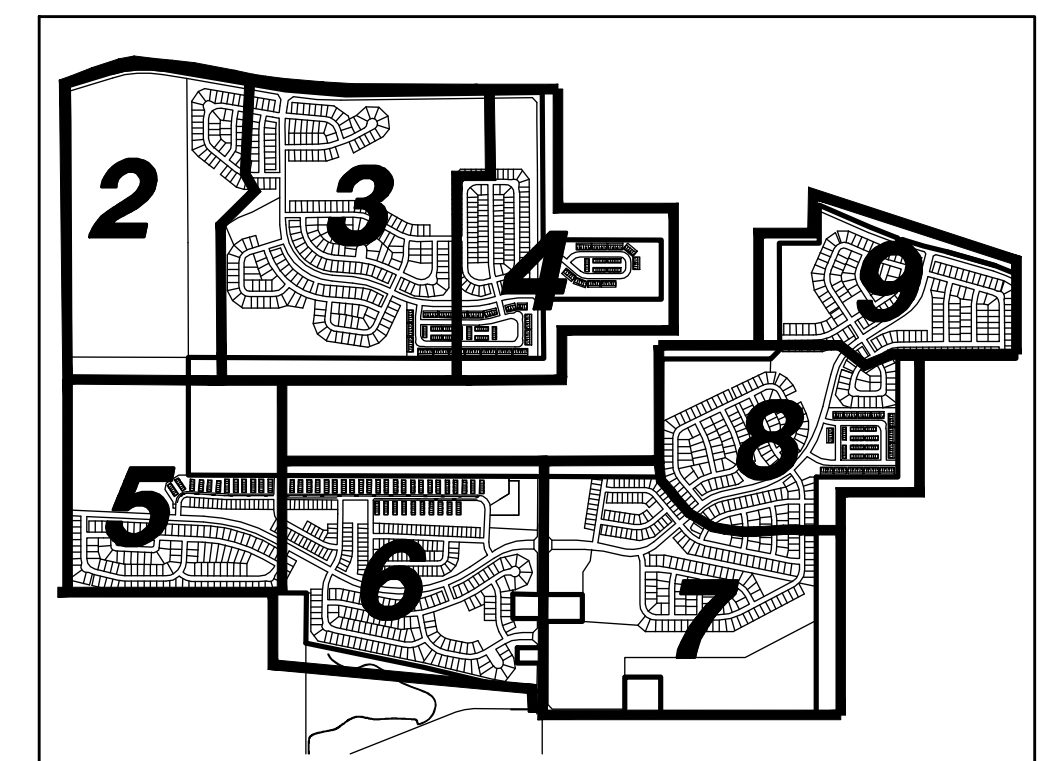
DISC NO.: 456275 FILE NAME: PREENG  
DRAWN BY: KMS FLD. BK. / PG. NO.: ----  
COMPLETION DATE: 12-14-22 JOB NO.: 456.275  
XREF: PROJECT MANAGER: MAM  
REV: 02-01-23/LAL  
REV: 03-13-23/MAM

PLT FILE CREATED: 3/17/2023 BY: KRISTIN STANSEL DRAWING PATH: P:\182670\DWG\182670\PRELIMINARY\PRELIM.DWG



**LEGEND**

EXISTING	PROPOSED	DESCRIPTION
		MANHOLE
		CATCH BASIN
		INLET
		CLEANOUT
		SLOPE INLET BOX
		HEADWALL
		END SECTION
		STORM SEWER
		SANITARY SEWER
		FORCEMAIN
		WATERMAIN
		VALVE & BOX
		WATER VALVE IN VAULT
		FIRE HYDRANT
		CONTOURS
		ELEVATIONS
		STREET LIGHT
		WATERMAIN PROTECTION
		SILT FENCE INLET PROTECTOR
		TEMPORARY STRAW BALE DITCH CHECK
		SILT FENCE DITCH CHECK
		RIP-RAP
		OVERFLOW ROUTE
		FLOODPLAIN LIMITS
		PER CEMCON LTD. STUDY



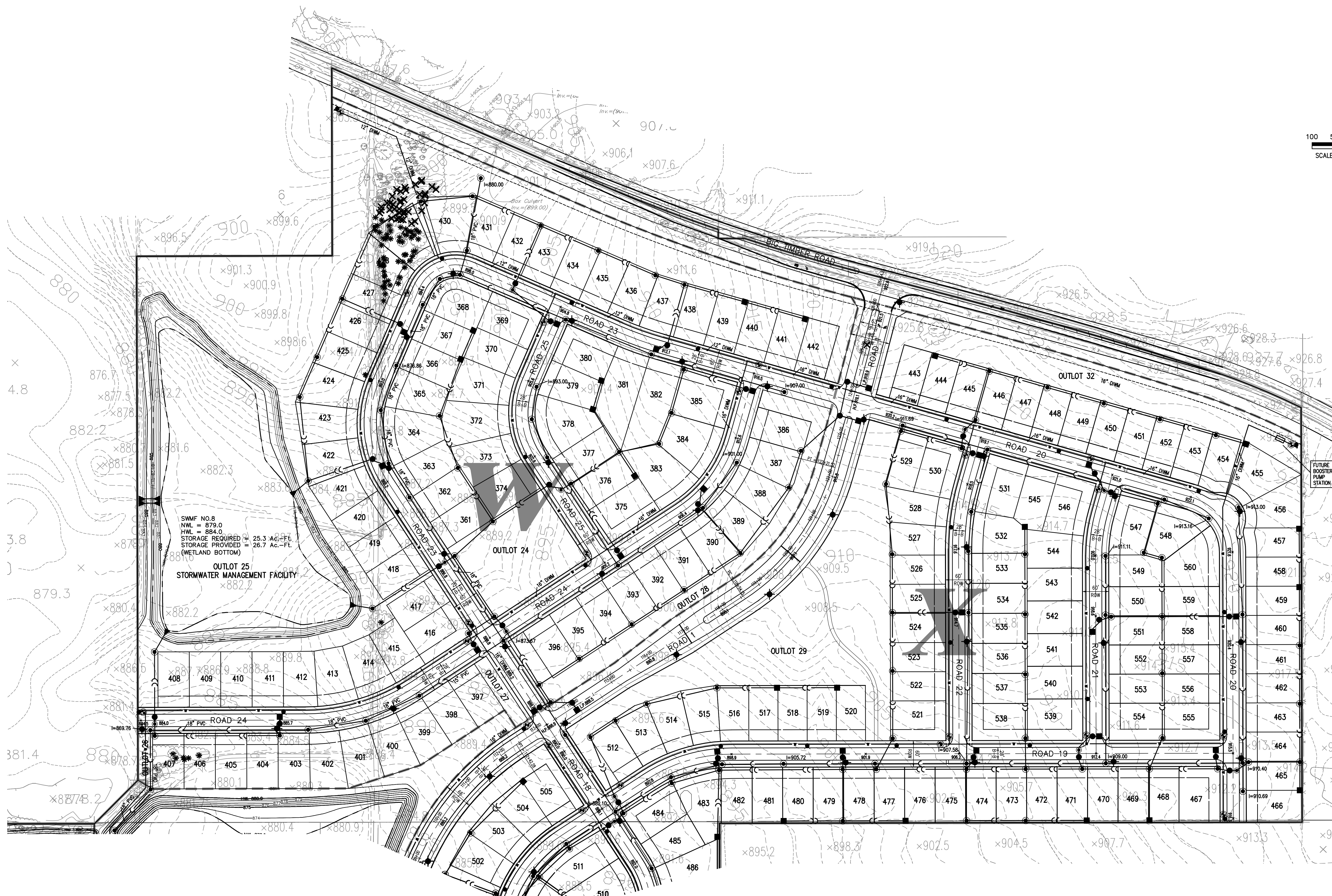
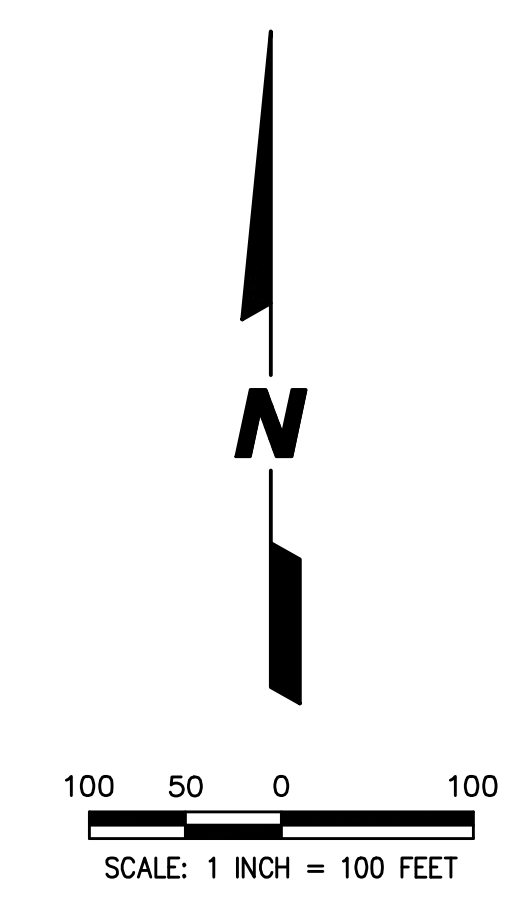
**KEYMAP**

PREPARED FOR:  
 HAMPSHIRE WEST LLC  
 1751 A WEST DIEHL ROAD  
 NAPERVILLE, ILLINOIS 60563  
 (630) 851-5490

PREPARED BY:  
**CEMCON, Ltd.**  
 Consulting Engineers, Land Surveyors & Planners  
 2280 White Oak Circle, Suite 100  
 Aurora, Illinois 60502-9675  
 PH: 630.862.2100 FAX: 630.862.2199  
 E-Mail: info@cemcon.com Website: www.cemcon.com

DISC NO.: 456275 FILE NAME: PREENG  
 DRAWN BY: KMS FLD. BK. / PG. NO.: ----  
 COMPLETION DATE: 12-14-22 JOB NO.: 456.275  
 REV: PROJECT MANAGER : MAM  
 REV: 02-01-23/LAL  
 REV: 03-13-23/MAM



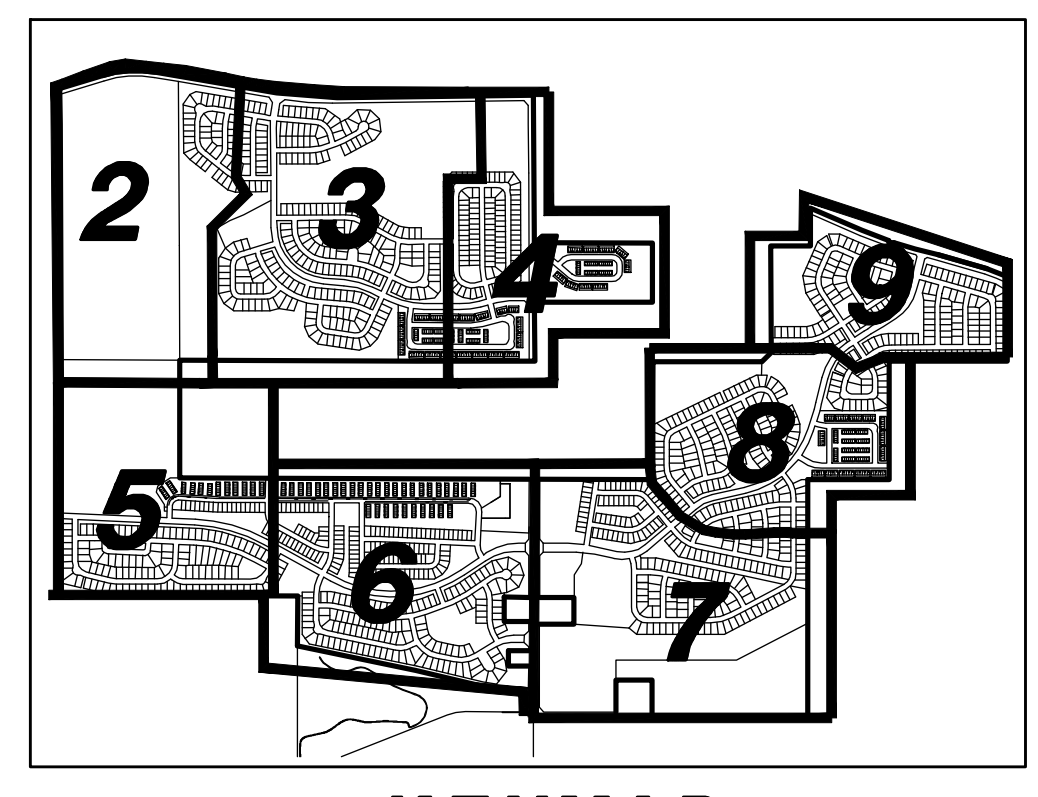


SWMF NO. 8  
 NWL = 879.0  
 HWL = 884.0  
 STORAGE REQUIRED = 25.3 AC.-FL.  
 STORAGE PROVIDED = 26.7 AC.-FL.  
 (WETLAND BOTTOM)

OUTLOT 25  
 STORMWATER MANAGEMENT FACILITY  
 ×882.2

**LEGEND**

EXISTING	PROPOSED	DESCRIPTION
○	●	MANHOLE
□	■	CATCH BASIN
○	●	INLET
○	■	CLEANOUT
○	■	SLOPE INLET BOX
—	—	HEADWALL
—	—	END SECTION
—	—	STORM SEWER
—	—	SANITARY SEWER
—	—	FORCEMAIN
—	—	WATERMAIN
○	●	VALVE & BOX
○	●	WATER VALVE IN VAULT
○	●	FIRE HYDRANT
—	—	CONTOURS
(ELEV)	ELEV	ELEVATIONS
—	—	STREET LIGHT
—	—	WATERMAIN PROTECTION
—	—	SILT FENCE INLET PROTECTOR
—	—	TEMPORARY STRAW BALE DITCH CHECK
—	—	SILT FENCE DITCH CHECK
—	—	RIP-RAP
—	—	OVERFLOW ROUTE
—	—	FLOODPLAIN LIMITS PER CEMCON LTD. STUDY

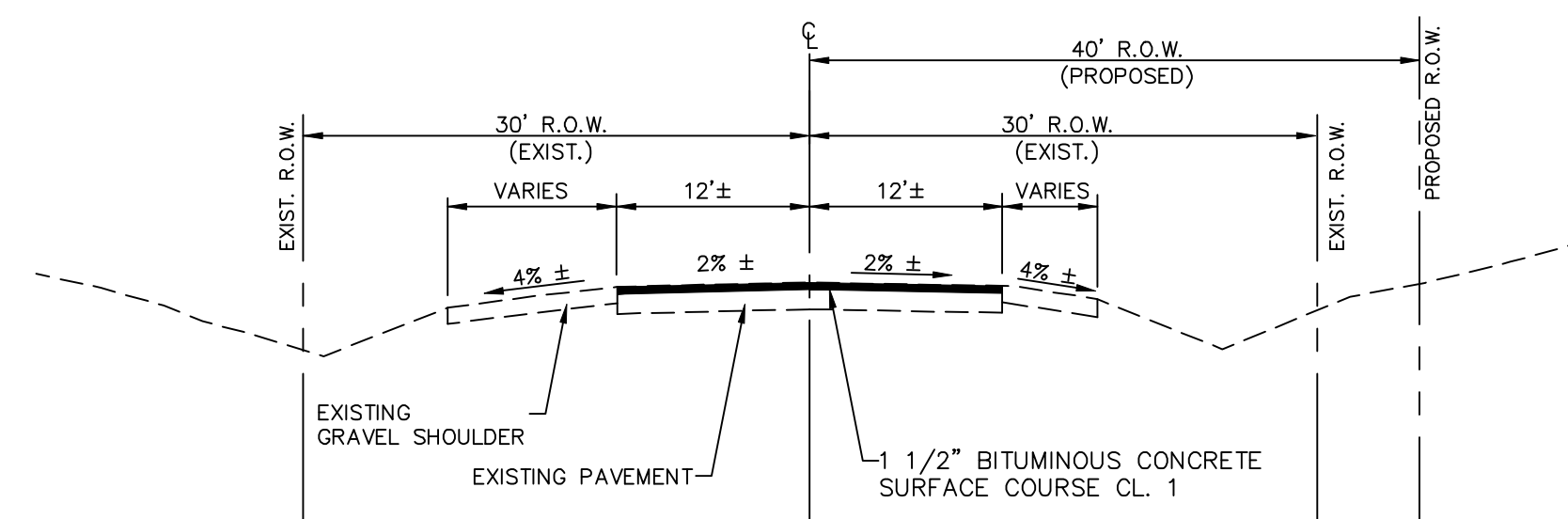


**KEYMAP**

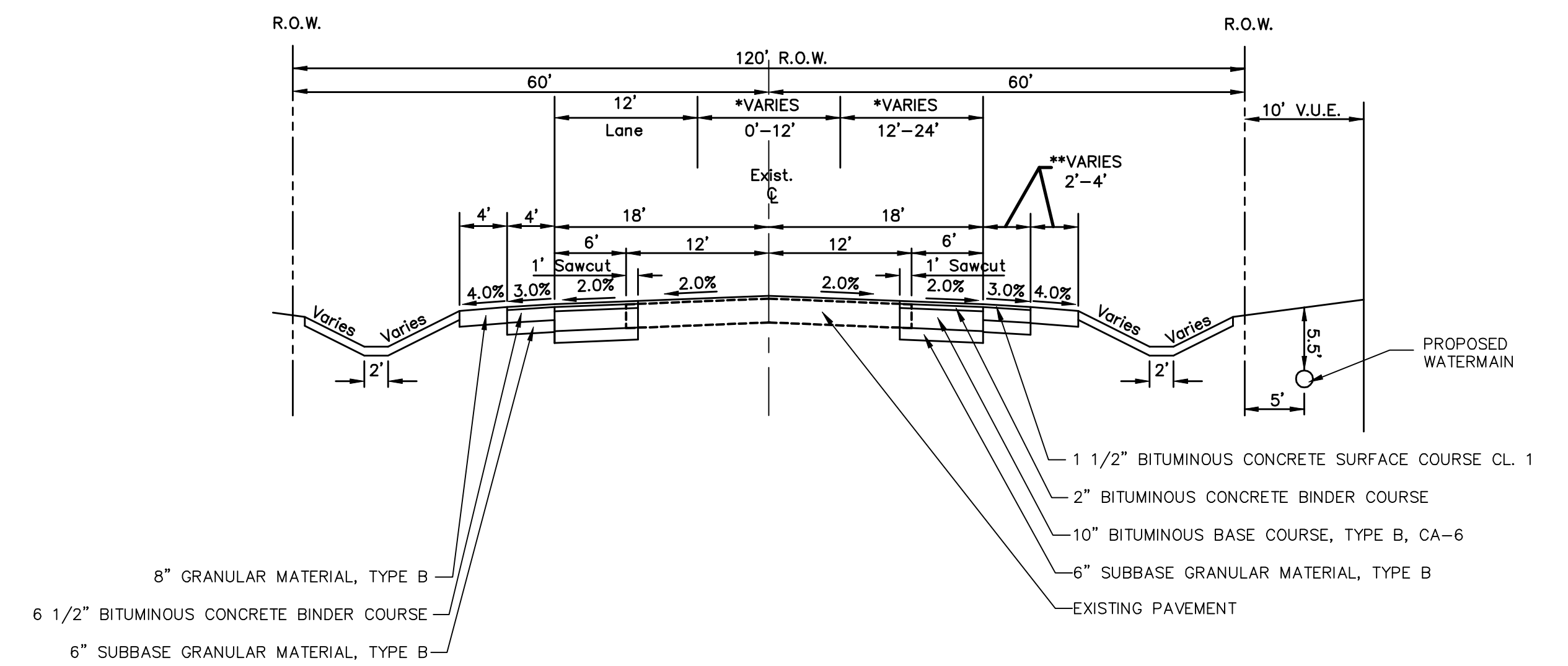
PREPARED FOR:  
 HAMPSHIRE WEST LLC  
 1751 A WEST DIEHL ROAD  
 NAPERVILLE, ILLINOIS 60563  
 (630) 851-5490

PREPARED BY:  
**CEMCON, Ltd.**  
 Consulting Engineers, Land Surveyors & Planners  
 2280 White Oak Circle, Suite 100  
 Aurora, Illinois 60502-9675  
 PH: 630.862.2100 FAX: 630.862.2199  
 E-Mail: info@cemcon.com Website: www.cemcon.com

DISC NO.: 456275 FILE NAME: PREENG  
 DRAWN BY: KMS FLD. BK. / PG. NO.: -----  
 COMPLETION DATE: 12-14-22 JOB NO.: 456.275  
 XREF : PROJECT MANAGER : MAM  
 REV: 02-01-23/LAL  
 REV: 03-13-23/MAM

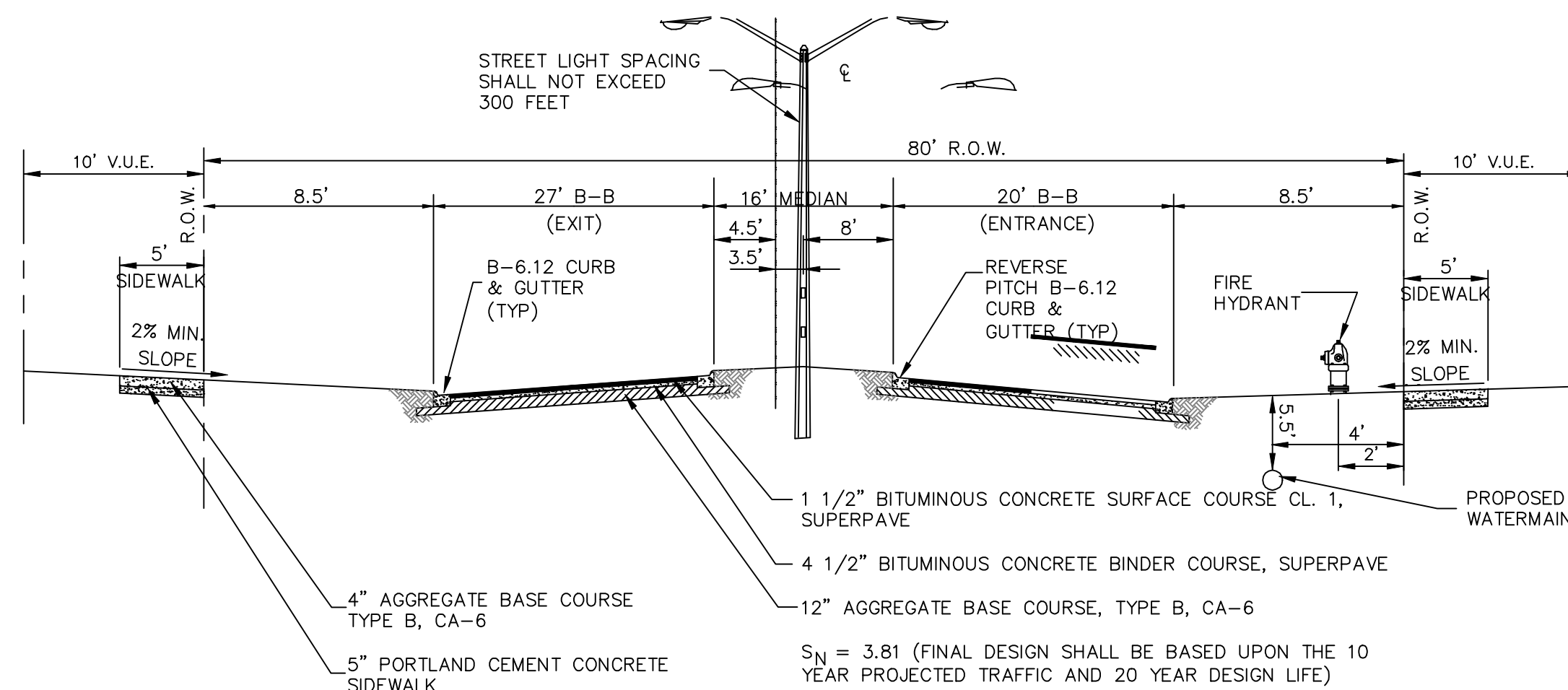


**KELLEY ROAD  
(EAST OF HARMONY ROAD)  
(LOOKING WEST)  
(N.T.S.)**

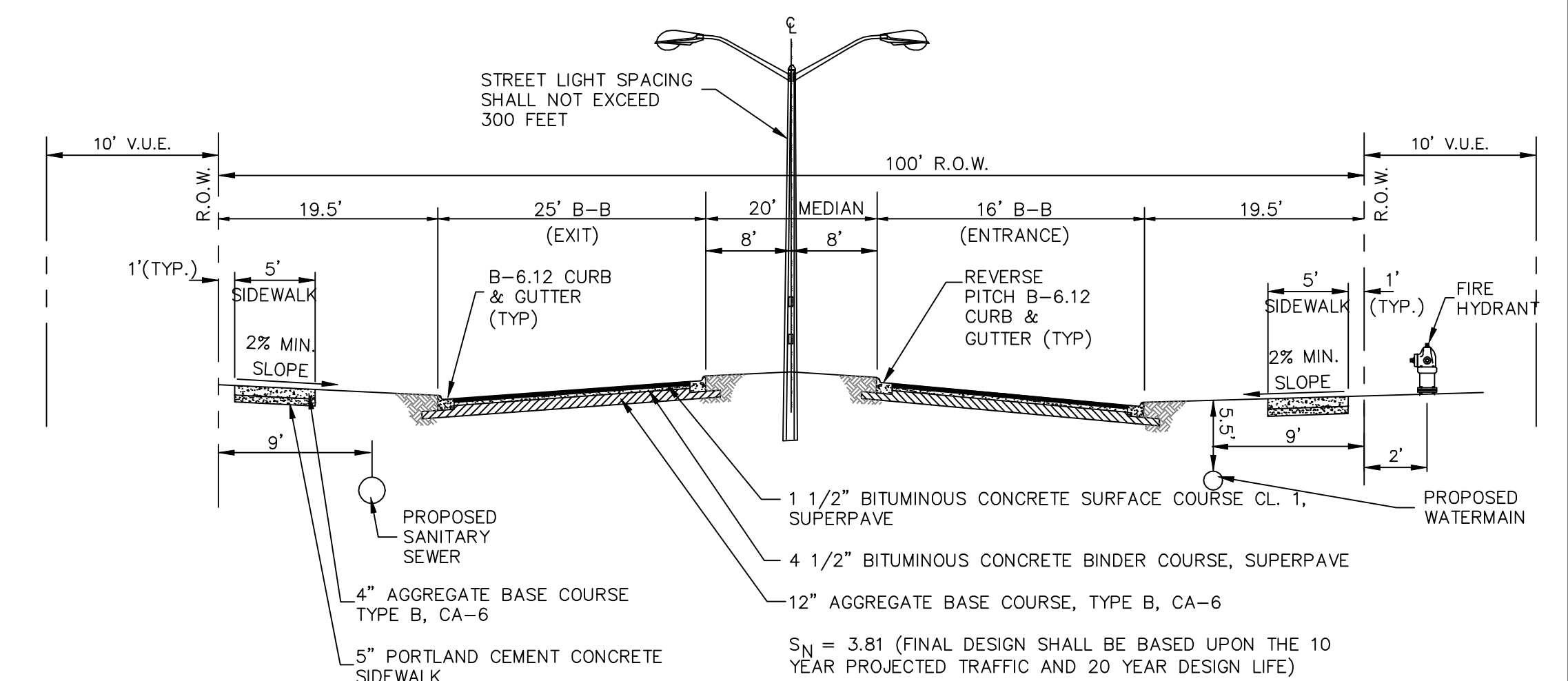


**HARMONY ROAD, BIG TIMBER ROAD, MELMS ROAD  
(N.T.S.)**

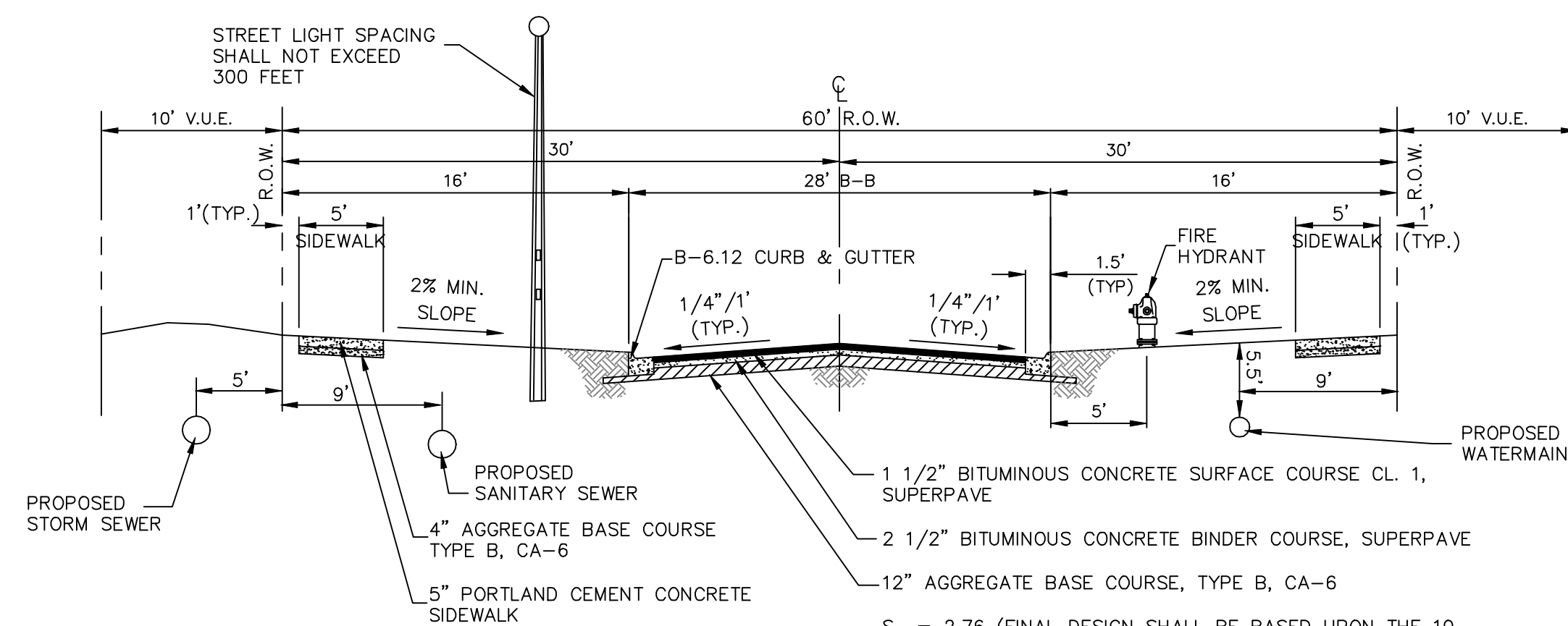
\*VARIES FOR THE INCLUSION OF RIGHT AND LEFT TURN LANES  
\*\*SHOULDERS TO BE 4' WIDE IN LOCATIONS WHERE R.O.W. IS NOT DEDICATED AS PART OF THE DEVELOPMENT



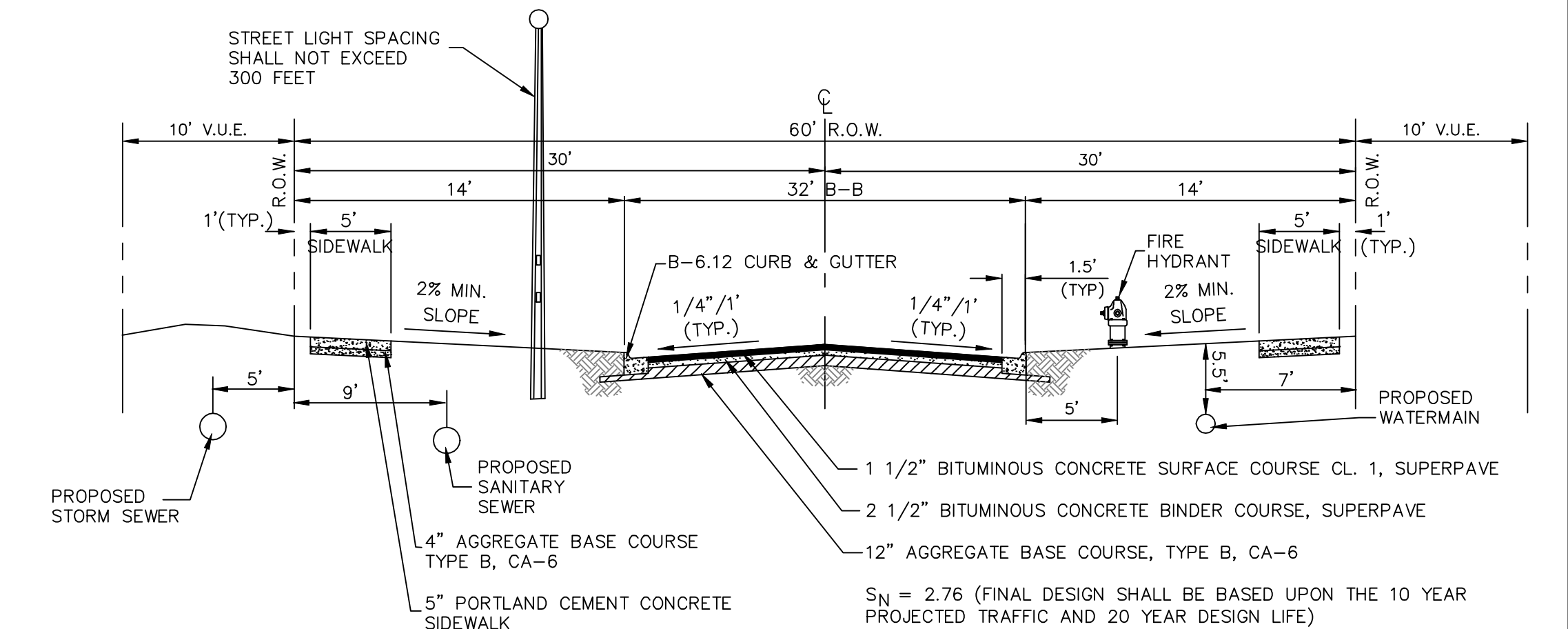
**SUBDIVISION ENTRYWAY @ BIG TIMBER ROAD  
(N.T.S.)**



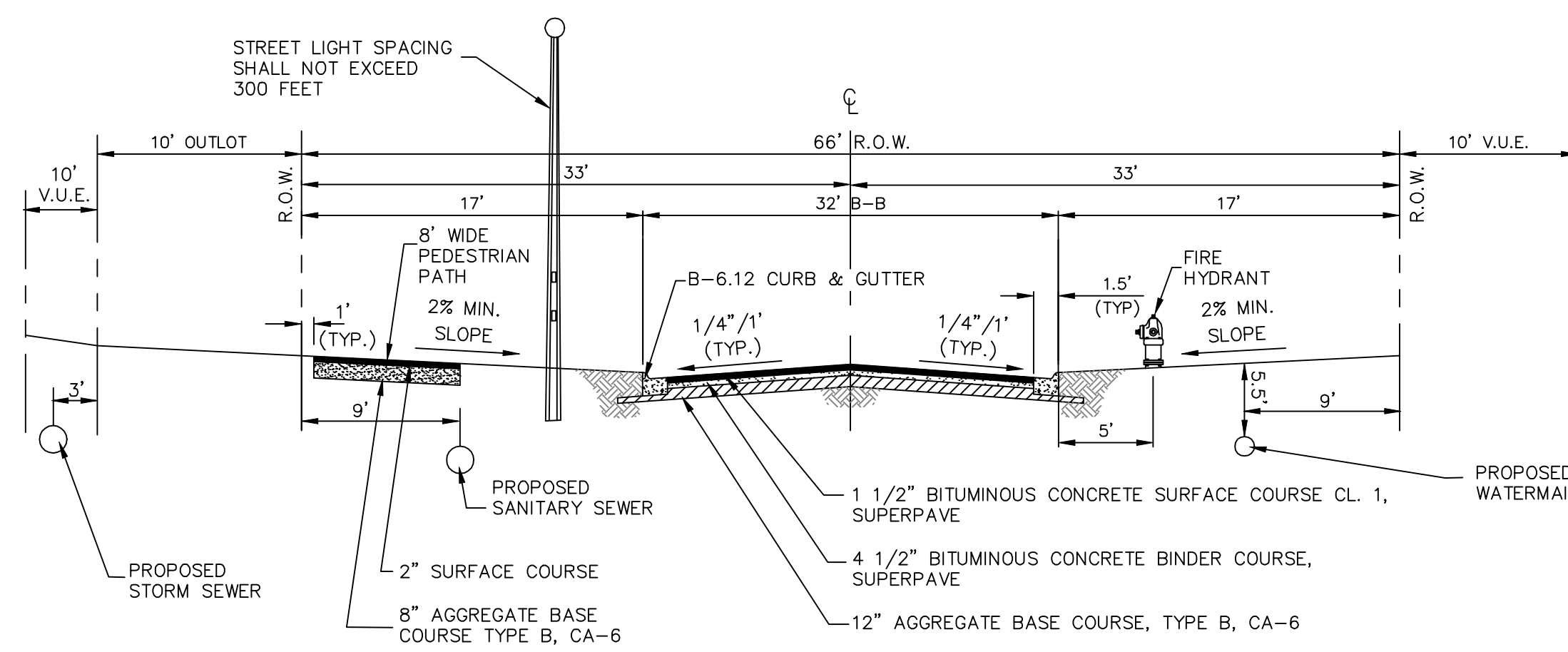
**MAIN SUBDIVISION ENTRYWAY AT HARMONY ROAD  
(N.T.S.)**



**MINOR RESIDENTIAL STREET - TOWN HOMES  
(N.T.S.)**



**MINOR RESIDENTIAL STREET - SINGLE FAMILY  
(N.T.S.)**



**COLLECTOR ROADS  
(N.T.S.)**

PREPARED FOR:  
**HAMPSHIRE WEST LLC**  
1751 A WEST DIEHL ROAD  
NAPERVILLE, ILLINOIS 60563  
(630) 851-5490

PREPARED BY:  
**CEMCON, Ltd.**  
Consulting Engineers, Land Surveyors & Planners  
2280 White Oak Circle, Suite 100  
Aurora, Illinois 60502-9675  
PH: 630.862.2100 FAX: 630.862.2199  
E-Mail: info@cemcon.com Website: www.cemcon.com

DISC NO.: 456275 FILE NAME: PREENG  
DRAWN BY: KMS FLD. BK. / PG. NO.: ----  
COMPLETION DATE: 12-14-22 JOB NO.: 456.275  
XREF: PROJECT MANAGER: MAM  
REV: 02-01-23/LAL